



# Sam 68 rabbit pAb

Cat No.:ES3405

For research use only

## Overview

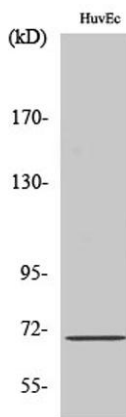
<b>Product Name</b>	Sam 68 rabbit pAb
<b>Host species</b>	Rabbit
<b>Applications</b>	WB;ELISA
<b>Species Cross-Reactivity</b>	Human;Mouse;Rat
<b>Recommended dilutions</b>	Western Blot: 1/500 - 1/2000. ELISA: 1/10000. Not yet tested in other applications.
<b>Immunogen</b>	The antiserum was produced against synthesized peptide derived from human Sam 68. AA range:96-145
<b>Specificity</b>	Sam 68 Polyclonal Antibody detects endogenous levels of Sam 68 protein.
<b>Formulation</b>	Liquid in PBS containing 50% glycerol, 0.5% BSA and 0.02% sodium azide.
<b>Storage</b>	Store at -20°C. Avoid repeated freeze-thaw cycles.
<b>Protein Name</b>	KH domain-containing RNA-binding signal transduction-associated protein 1
<b>Gene Name</b>	KHDRBS1
<b>Cellular localization</b>	Nucleus . Cytoplasm . Membrane . Predominantly located in the nucleus but also located partially in the cytoplasm. .
<b>Purification</b>	The antibody was affinity-purified from rabbit antiserum by affinity-chromatography using epitope-specific immunogen.
<b>Clonality</b>	Polyclonal
<b>Concentration</b>	1 mg/ml
<b>Observed band</b>	68kD
<b>Human Gene ID</b>	10657
<b>Human Swiss-Prot Number</b>	Q07666
<b>Alternative Names</b>	KHDRBS1; SAM68; KH domain-containing; RNA-binding, signal transduction-associated protein 1; GAP-associated tyrosine phosphoprotein p62; Src-associated in mitosis 68 kDa protein; Sam68; p21 Ras GTPase-activating protein-associated p62; p68



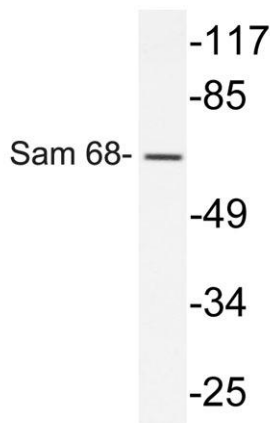


## Background

This gene encodes a member of the K homology domain-containing, RNA-binding, signal transduction-associated protein family. The encoded protein appears to have many functions and may be involved in a variety of cellular processes, including alternative splicing, cell cycle regulation, RNA 3'-end formation, tumorigenesis, and regulation of human immunodeficiency virus gene expression. Alternative splicing results in multiple transcript variants. [provided by RefSeq, Dec 2012],



Western Blot analysis of various cells using Sam 68 Polyclonal Antibody



Western blot analysis of lysate from HUVEC cells, using Sam 68 antibody.

