



RSAD1 rabbit pAb

Cat No.:ES3395

For research use only

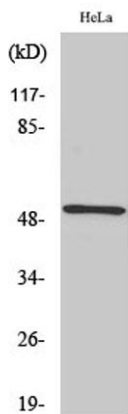
Overview

Product Name	RSAD1 rabbit pAb
Host species	Rabbit
Applications	WB;IHC;IF;ELISA
Species Cross-Reactivity	Human;Mouse
Recommended dilutions	Western Blot: 1/500 - 1/2000. Immunohistochemistry: 1/100 - 1/300. ELISA: 1/5000. Not yet tested in other applications.
Immunogen	The antiserum was produced against synthesized peptide derived from human RSAD1. AA range:298-347
Specificity	RSAD1 Polyclonal Antibody detects endogenous levels of RSAD1 protein.
Formulation	Liquid in PBS containing 50% glycerol, 0.5% BSA and 0.02% sodium azide.
Storage	Store at -20°C. Avoid repeated freeze-thaw cycles.
Protein Name	Radical S-adenosyl methionine domain-containing protein 1 mitochondrial
Gene Name	RSAD1
Cellular localization	Mitochondrion .
Purification	The antibody was affinity-purified from rabbit antiserum by affinity-chromatography using epitope-specific immunogen.
Clonality	Polyclonal
Concentration	1 mg/ml
Observed band	52kD
Human Gene ID	55316
Human Swiss-Prot Number	Q9HA92
Alternative Names	RSAD1; Radical S-adenosyl methionine domain-containing protein 1; mitochondrial; Oxygen-independent coproporphyrinogen-III oxidase-like protein RSAD1
Background	cofactor: Binds 1 4Fe-4S cluster. The cluster is coordinated with 3 cysteines and an exchangeable



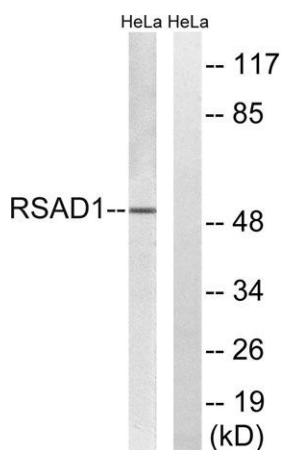
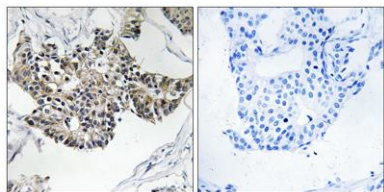


S-adenosyl-L-methionine .,function:May be involved in porphyrin cofactor biosynthesis.,similarity:Belongs to the anaerobic coproporphyrinogen-III oxidase family.,



Western Blot analysis of various cells using RSAD1 Polyclonal Antibody

Immunohistochemistry analysis of paraffin-embedded human breast carcinoma tissue, using RSAD1 Antibody. The picture on the right is blocked with the synthesized peptide.



Western blot analysis of lysates from HeLa cells, using RSAD1 Antibody. The lane on the right is blocked with the synthesized peptide.

