



# Rho D rabbit pAb

Cat No.:ES3350

For research use only

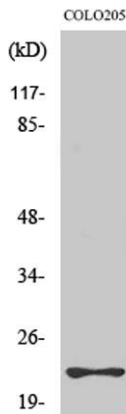
## Overview

<b>Product Name</b>	Rho D rabbit pAb
<b>Host species</b>	Rabbit
<b>Applications</b>	WB;ELISA;IHC
<b>Species Cross-Reactivity</b>	Human;Rat;Mouse;
<b>Recommended dilutions</b>	WB 1:500-2000;IHC-p 1:50-300; ELISA 2000-20000
<b>Immunogen</b>	The antiserum was produced against synthesized peptide derived from human RHOD. AA range:113-162
<b>Specificity</b>	Rho D Polyclonal Antibody detects endogenous levels of Rho D protein.
<b>Formulation</b>	Liquid in PBS containing 50% glycerol, 0.5% BSA and 0.02% sodium azide.
<b>Storage</b>	Store at -20°C. Avoid repeated freeze-thaw cycles.
<b>Protein Name</b>	Rho-related GTP-binding protein RhoD
<b>Gene Name</b>	RHOD
<b>Cellular localization</b>	Cell membrane ; Lipid-anchor ; Cytoplasmic side . Early endosome . Colocalizes with RAB5 to early endosomes (By similarity). .
<b>Purification</b>	The antibody was affinity-purified from rabbit antiserum by affinity-chromatography using epitope-specific immunogen.
<b>Clonality</b>	Polyclonal
<b>Concentration</b>	1 mg/ml
<b>Observed band</b>	25kD
<b>Human Gene ID</b>	29984
<b>Human Swiss-Prot Number</b>	O00212
<b>Alternative Names</b>	RHOD; ARHD; Rho-related GTP-binding protein RhoD; Rho-related protein HP1; RhoHP1
<b>Background</b>	Ras homolog, or Rho, proteins interact with protein kinases and may serve as targets for activated GTPase. They play a critical role in muscle differentiation. The protein encoded by this gene binds GTP and is a member of the small GTPase

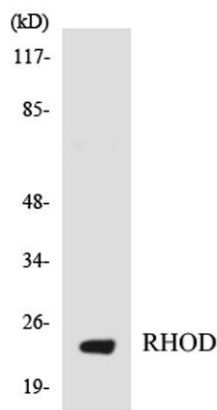




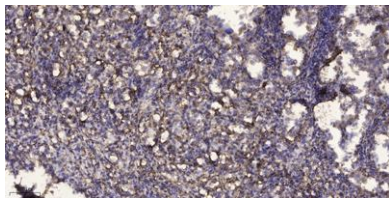
superfamily. It is involved in endosome dynamics and reorganization of the actin cytoskeleton, and it may coordinate membrane transport with the function of the cytoskeleton. Two transcript variants encoding different isoforms have been found for this gene. [provided by RefSeq, Jul 2014],



Western Blot analysis of various cells using Rho D Polyclonal Antibody diluted at 1:500



Western blot analysis of the lysates from HT-29 cells using RHOD antibody.



Immunohistochemical analysis of paraffin-embedded human Squamous cell carcinoma of lung. 1, Antibody was diluted at 1:200(4° overnight). 2, Tris-EDTA,pH9.0 was used for antigen retrieval. 3,Secondary antibody was diluted at 1:200(room temperature, 45min).

