



# PSMC6 rabbit pAb

Cat No.:ES3270

For research use only

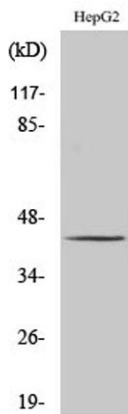
## Overview

<b>Product Name</b>	PSMC6 rabbit pAb
<b>Host species</b>	Rabbit
<b>Applications</b>	WB;IHC
<b>Species Cross-Reactivity</b>	Human;Mouse
<b>Recommended dilutions</b>	WB 1:500-2000;IHC-p 1:50-300
<b>Immunogen</b>	The antiserum was produced against synthesized peptide derived from human PSMC6. AA range:61-110
<b>Specificity</b>	PSMC6 Polyclonal Antibody detects endogenous levels of PSMC6 protein.
<b>Formulation</b>	Liquid in PBS containing 50% glycerol, 0.5% BSA and 0.02% sodium azide.
<b>Storage</b>	Store at -20°C. Avoid repeated freeze-thaw cycles.
<b>Protein Name</b>	26S protease regulatory subunit 10B
<b>Gene Name</b>	PSMC6
<b>Cellular localization</b>	Cytoplasm . Nucleus .
<b>Purification</b>	The antibody was affinity-purified from rabbit antiserum by affinity-chromatography using epitope-specific immunogen.
<b>Clonality</b>	Polyclonal
<b>Concentration</b>	1 mg/ml
<b>Observed band</b>	44kD
<b>Human Gene ID</b>	5706
<b>Human Swiss-Prot Number</b>	P62333
<b>Alternative Names</b>	PSMC6; SUG2; 26S protease regulatory subunit 10B; 26S proteasome AAA-ATPase subunit RPT4; Proteasome 26S subunit ATPase 6; Proteasome subunit p42
<b>Background</b>	proteasome 26S subunit, ATPase 6(PSMC6) Homo sapiens The 26S proteasome is a multicatalytic proteinase complex with a highly ordered structure composed of 2 complexes, a 20S core and a 19S regulator. The 20S core is composed of 4 rings of 28

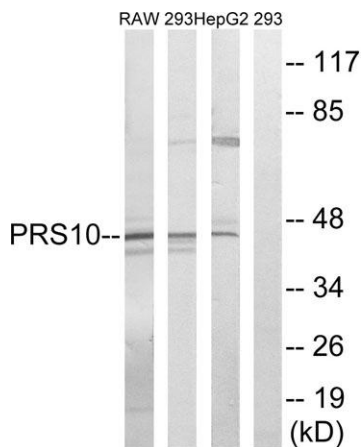




non-identical subunits; 2 rings are composed of 7 alpha subunits and 2 rings are composed of 7 beta subunits. The 19S regulator is composed of a base, which contains 6 ATPase subunits and 2 non-ATPase subunits, and a lid, which contains up to 10 non-ATPase subunits. Proteasomes are distributed throughout eukaryotic cells at a high concentration and cleave peptides in an ATP/ubiquitin-dependent process in a non-lysosomal pathway. An essential function of a modified proteasome, the immunoproteasome, is the processing of class I MHC peptides. This gene encodes one of the ATPase subunits, a member of the triple-A family of ATPases which have a chaperone-like activity. Pseudogenes have been identified on chrom



Western Blot analysis of various cells using PSMC6 Polyclonal Antibody

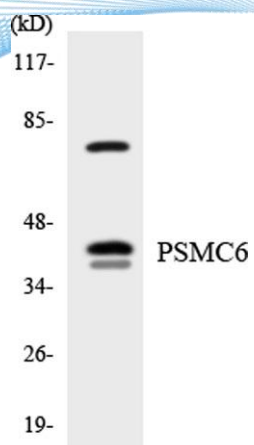


Western blot analysis of lysates from HepG2, 293, and RAW264.7 cells, using PSMC6 Antibody. The lane on the right is blocked with the synthesized peptide.

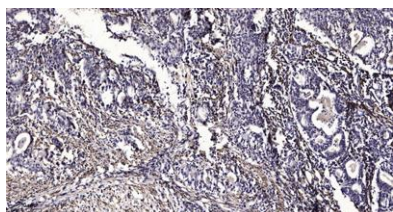




**ELK Biotechnology**



Western blot analysis of the lysates from HeLa cells using PSMC6 antibody.



Immunohistochemical analysis of paraffin-embedded human Gastric adenocarcinoma. 1, Antibody was diluted at 1:200(4° overnight). 2, Tris-EDTA,pH9.0 was used for antigen retrieval. 3,Secondary antibody was diluted at 1:200(room temperature, 45min).



+86-27-59760950

ELKbio@ELKbiotech.com

www.elkbiotech.com

23-2, No.388 Gaoxin 2nd Road,Wuhan East Lake Hi-tech Development Zone, Hubei , P.R.C