



# PRP19 rabbit pAb

Cat No.:ES3262

For research use only

## Overview

<b>Product Name</b>	PRP19 rabbit pAb
<b>Host species</b>	Rabbit
<b>Applications</b>	WB;IHC;IF;ELISA
<b>Species Cross-Reactivity</b>	Human;Mouse;Rat
<b>Recommended dilutions</b>	Western Blot: 1/500 - 1/2000. Immunohistochemistry: 1/100 - 1/300. ELISA: 1/40000. Not yet tested in other applications.
<b>Immunogen</b>	The antiserum was produced against synthesized peptide derived from human PRPF19. AA range:171-220
<b>Specificity</b>	PRP19 Polyclonal Antibody detects endogenous levels of PRP19 protein.
<b>Formulation</b>	Liquid in PBS containing 50% glycerol, 0.5% BSA and 0.02% sodium azide.
<b>Storage</b>	Store at -20°C. Avoid repeated freeze-thaw cycles.
<b>Protein Name</b>	Pre-mRNA-processing factor 19
<b>Gene Name</b>	PRPF19
<b>Cellular localization</b>	Nucleus . Nucleus, nucleoplasm . Cytoplasm, cytoskeleton, spindle . Cytoplasm . Lipid droplet . Nucleoplasmic in interphase cells. Irregularly distributed in anaphase cells. In prophase cells, uniformly distributed, but not associated with condensing chro
<b>Purification</b>	The antibody was affinity-purified from rabbit antiserum by affinity-chromatography using epitope-specific immunogen.
<b>Clonality</b>	Polyclonal
<b>Concentration</b>	1 mg/ml
<b>Observed band</b>	50kD
<b>Human Gene ID</b>	27339
<b>Human Swiss-Prot Number</b>	Q9UMS4
<b>Alternative Names</b>	PRPF19; NMP200; PRP19; SNEV; Pre-mRNA-processing factor 19; Nuclear matrix

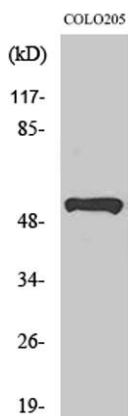




protein 200; PRP19/PSO4 homolog; hPso4;  
Senescence evasion factor

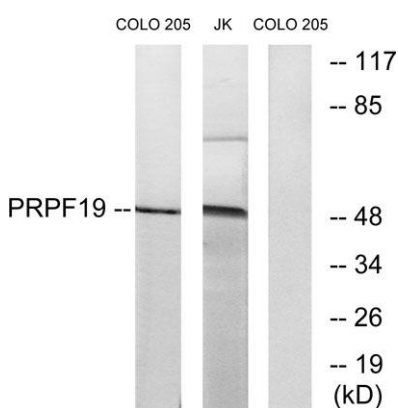
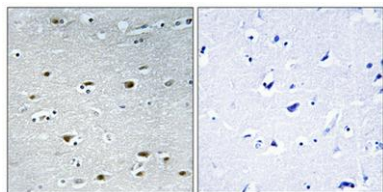
PSO4 is the human homolog of yeast Pso4, a gene essential for cell survival and DNA repair (Beck et al., 2008 [PubMed 18263876]).[supplied by OMIM, Sep 2008],

**Background**



Western Blot analysis of various cells using PRP19 Polyclonal Antibody

Immunohistochemical analysis of paraffin-embedded Human brain. Antibody was diluted at 1:100(4° overnight). High-pressure and temperature Tris-EDTA,pH8.0 was used for antigen retrieval. Negative contrl (right) obtained from antibody was pre-absorbed by i



Western blot analysis of lysates from COLO and Jurkat cells, using PRPF19 Antibody. The lane on the right is blocked with the synthesized peptide.

