



# PRDM12 rabbit pAb

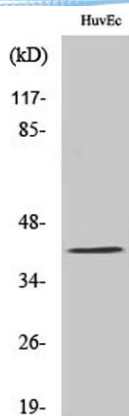
Cat No.:ES3258

For research use only

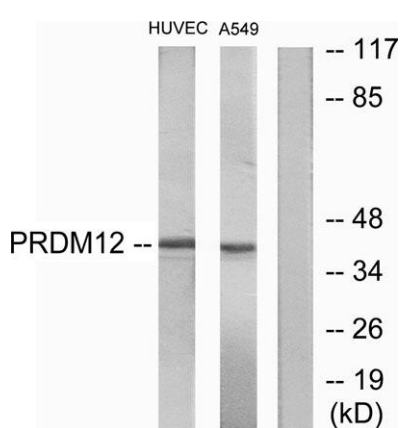
## Overview

<b>Product Name</b>	PRDM12 rabbit pAb
<b>Host species</b>	Rabbit
<b>Applications</b>	IF;ELISA;IHC
<b>Species Cross-Reactivity</b>	Human;Mouse
<b>Recommended dilutions</b>	IF/ICC 1:50-300; ELISA 1:2000-20000; IHC-p 1:50-200
<b>Immunogen</b>	The antiserum was produced against synthesized peptide derived from human PRDM12. AA range:191-240
<b>Specificity</b>	PRDM12 Polyclonal Antibody detects endogenous levels of PRDM12 protein.
<b>Formulation</b>	Liquid in PBS containing 50% glycerol, 0.5% BSA and 0.02% sodium azide.
<b>Storage</b>	Store at -20°C. Avoid repeated freeze-thaw cycles.
<b>Protein Name</b>	PR domain zinc finger protein 12
<b>Gene Name</b>	PRDM12
<b>Cellular localization</b>	Nucleus .
<b>Purification</b>	The antibody was affinity-purified from rabbit antiserum by affinity-chromatography using epitope-specific immunogen.
<b>Clonality</b>	Polyclonal
<b>Concentration</b>	1 mg/ml
<b>Observed band</b>	40kD
<b>Human Gene ID</b>	59335
<b>Human Swiss-Prot Number</b>	Q9H4Q4
<b>Alternative Names</b>	PRDM12; PFM9; PR domain zinc finger protein 12; PR domain-containing protein 12
<b>Background</b>	function:May be involved in transcriptional regulation.,similarity:Contains 1 SET domain.,similarity:Contains 3 C2H2-type zinc fingers.,

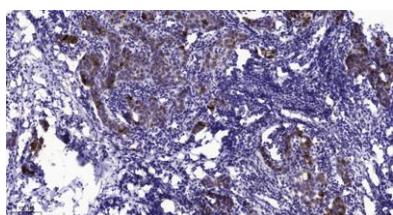




Western Blot analysis of various cells using PRDM12 Polyclonal Antibody cells nucleus extracted by Minute TM Cytoplasmic and Nuclear Fractionation kit (SC-003, Inventbiotech, MN, USA).



Western blot analysis of lysates from HUVEC and A549 cells, using PRDM12 Antibody. The lane on the right is blocked with the synthesized peptide.



Immunohistochemical analysis of paraffin-embedded human Breast cancer. 1, Antibody was diluted at 1:200(4° overnight). 2, Tris-EDTA, pH9.0 was used for antigen retrieval. 3, Secondary antibody was diluted at 1:200(room temperature, 45min).

