



pHyde rabbit pAb

Cat No.:ES3196

For research use only

Overview

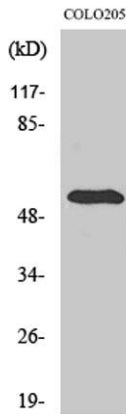
Product Name	pHyde rabbit pAb
Host species	Rabbit
Applications	WB;IHC;IF;ELISA
Species Cross-Reactivity	Human;Mouse;Rat
Recommended dilutions	Western Blot: 1/500 - 1/2000. Immunohistochemistry: 1/100 - 1/300. Immunofluorescence: 1/200 - 1/1000. ELISA: 1/10000. Not yet tested in other applications.
Immunogen	The antiserum was produced against synthesized peptide derived from human STEAP3. AA range:421-470
Specificity	pHyde Polyclonal Antibody detects endogenous levels of pHyde protein.
Formulation	Liquid in PBS containing 50% glycerol, 0.5% BSA and 0.02% sodium azide.
Storage	Store at -20°C. Avoid repeated freeze-thaw cycles.
Protein Name	Metalloreductase STEAP3
Gene Name	STEAP3
Cellular localization	Endosome membrane ; Multi-pass membrane protein . Localizes to vesicular-like structures at the plasma membrane and around the nucleus.
Purification	The antibody was affinity-purified from rabbit antiserum by affinity-chromatography using epitope-specific immunogen.
Clonality	Polyclonal
Concentration	1 mg/ml
Observed band	54kD
Human Gene ID	55240
Human Swiss-Prot Number	Q658P3
Alternative Names	STEAP3; TSAP6; Metalloreductase STEAP3; Dudulin-2; Six-transmembrane epithelial antigen of prostate 3; Tumor suppressor-activated pathway protein 6; hTSAP6; pHyde; hpHyde





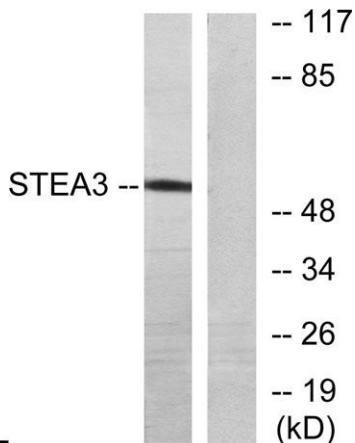
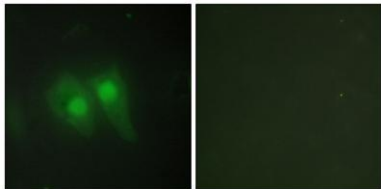
Background

STEAP3 metalloreductase(STEAP3) Homo sapiens
This gene encodes a multipass membrane protein that functions as an iron transporter. The encoded protein can reduce both iron (Fe³⁺) and copper (Cu²⁺) cations. This protein may mediate downstream responses to p53, including promoting apoptosis. Deficiency in this gene can cause anemia. Alternative splicing results in multiple transcript variants. [provided by RefSeq, Aug 2015],



Western Blot analysis of various cells using pHyde Polyclonal Antibody

Immunofluorescence analysis of HeLa cells, using STEA3 Antibody. The picture on the right is blocked with the synthesized peptide.

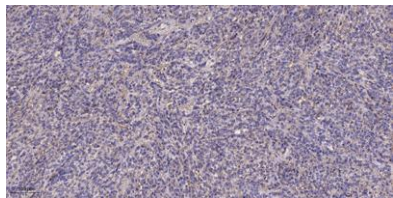


Western blot analysis of lysates from COLO205 cells, using STEA3 Antibody. The lane on the right is blocked with the synthesized peptide.





ELK Biotechnology



Immunohistochemical analysis of paraffin-embedded human Colon cancer. 1, Antibody was diluted at 1:200(4° overnight). 2, Tris-EDTA,pH9.0 was used for antigen retrieval. 3,Secondary antibody was diluted at 1:200(room temperature, 45min).



+86-27-59760950

ELKbio@ELKbiotech.com

www.elkbiotech.com

23-2, No.388 Gaoxin 2nd Road,Wuhan East Lake Hi-tech Development Zone, Hubei , P.R.C