



Photomedin-2 rabbit pAb

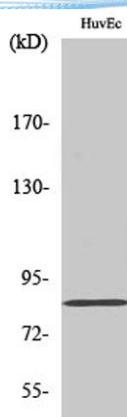
Cat No.:ES3195

For research use only

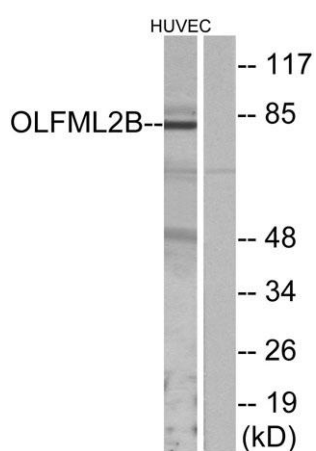
Overview

Product Name	Photomedin-2 rabbit pAb
Host species	Rabbit
Applications	WB;IHC;IF;ELISA
Species Cross-Reactivity	Human;Mouse
Recommended dilutions	Western Blot: 1/500 - 1/2000. Immunohistochemistry: 1/100 - 1/300. Immunofluorescence: 1/200 - 1/1000. ELISA: 1/10000. Not yet tested in other applications.
Immunogen	The antiserum was produced against synthesized peptide derived from human OLFML2B. AA range:171-220
Specificity	Photomedin-2 Polyclonal Antibody detects endogenous levels of Photomedin-2 protein.
Formulation	Liquid in PBS containing 50% glycerol, 0.5% BSA and 0.02% sodium azide.
Storage	Store at -20°C. Avoid repeated freeze-thaw cycles.
Protein Name	Olfactomedin-like protein 2B
Gene Name	OLFML2B
Cellular localization	Secreted .
Purification	The antibody was affinity-purified from rabbit antiserum by affinity-chromatography using epitope-specific immunogen.
Clonality	Polyclonal
Concentration	1 mg/ml
Observed band	84kD
Human Gene ID	25903
Human Swiss-Prot Number	Q68BL8
Alternative Names	OLFML2B; Olfactomedin-like protein 2B; Photomedin-2
Background	PTM:O-glycosylated and N-glycosylated.,similarity:Contains 1 olfactomedin-like domain.,subunit:Homodimer. Binds to heparin and chondroitin sulfate E.,

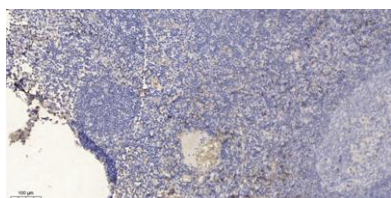




Western Blot analysis of various cells using Photomedin-2 Polyclonal Antibody



Western blot analysis of lysates from HUVEC cells, using OLFML2B Antibody. The lane on the right is blocked with the synthesized peptide.



Immunohistochemical analysis of paraffin-embedded human tonsil. 1, Antibody was diluted at 1:200(4° overnight). 2, Tris-EDTA,pH9.0 was used for antigen retrieval. 3,Secondary antibody was diluted at 1:200(room temperature, 30min).

