



PDZ-RhoGEF rabbit pAb

Cat No.:ES3173

For research use only

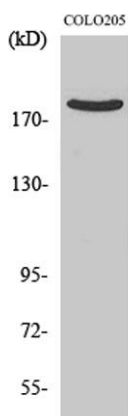
Overview

| | |
|---------------------------------|---|
| Product Name | PDZ-RhoGEF rabbit pAb |
| Host species | Rabbit |
| Applications | WB;IHC |
| Species Cross-Reactivity | Human;Mouse;Rat |
| Recommended dilutions | WB 1:500-2000;IHC-p 1:50-300 |
| Immunogen | The antiserum was produced against synthesized peptide derived from human ARHGEF11. AA range:198-247 |
| Specificity | PDZ-RhoGEF Polyclonal Antibody detects endogenous levels of PDZ-RhoGEF protein. |
| Formulation | Liquid in PBS containing 50% glycerol, 0.5% BSA and 0.02% sodium azide. |
| Storage | Store at -20°C. Avoid repeated freeze-thaw cycles. |
| Protein Name | Rho guanine nucleotide exchange factor 11 |
| Gene Name | ARHGEF11 |
| Cellular localization | Cytoplasm . Membrane . Translocated to the membrane upon stimulation. |
| Purification | The antibody was affinity-purified from rabbit antiserum by affinity-chromatography using epitope-specific immunogen. |
| Clonality | Polyclonal |
| Concentration | 1 mg/ml |
| Observed band | |
| Human Gene ID | 9826 |
| Human Swiss-Prot Number | O15085 |
| Alternative Names | ARHGEF11; KIAA0380; Rho guanine nucleotide exchange factor 11; PDZ-RhoGEF |
| Background | Rho GTPases play a fundamental role in numerous cellular processes that are initiated by extracellular stimuli that work through G protein coupled receptors. The encoded protein may form a complex with G proteins and stimulate Rho-dependent signals. A similar protein in rat interacts with |

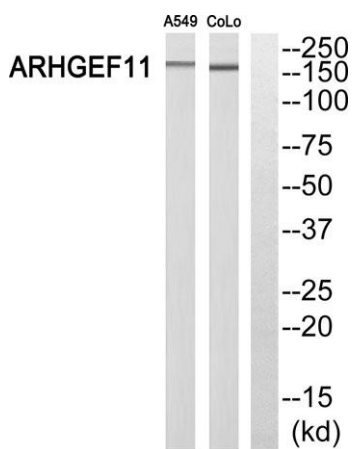




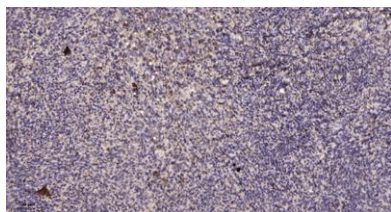
glutamate transporter EAAT4 and modulates its glutamate transport activity. Expression of the rat protein induces the reorganization of the actin cytoskeleton and its overexpression induces the formation of membrane ruffling and filopodia. Two alternative transcripts encoding different isoforms have been described. [provided by RefSeq, Jul 2008],



Western Blot analysis of various cells using PDZ-RhoGEF Polyclonal Antibody



Western blot analysis of ARHGEF11 Antibody. The lane on the right is blocked with the ARHGEF11 peptide.



Immunohistochemical analysis of paraffin-embedded human uterus. 1, Antibody was diluted at 1:200(4° overnight). 2, Tris-EDTA,pH9.0 was used for antigen retrieval. 3,Secondary antibody was diluted at 1:200(room temperature, 45min).

