



# NP220 rabbit pAb

Cat No.:ES2978

For research use only

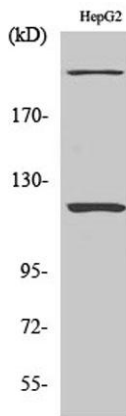
## Overview

<b>Product Name</b>	NP220 rabbit pAb
<b>Host species</b>	Rabbit
<b>Applications</b>	WB;IHC;IF;ELISA
<b>Species Cross-Reactivity</b>	Human;Rat;Mouse;
<b>Recommended dilutions</b>	Western Blot: 1/500 - 1/2000. Immunohistochemistry: 1/100 - 1/300. ELISA: 1/20000. Not yet tested in other applications.
<b>Immunogen</b>	The antiserum was produced against synthesized peptide derived from human ZNF638. AA range:1271-1320
<b>Specificity</b>	NP220 Polyclonal Antibody detects endogenous levels of NP220 protein.
<b>Formulation</b>	Liquid in PBS containing 50% glycerol, 0.5% BSA and 0.02% sodium azide.
<b>Storage</b>	Store at -20°C. Avoid repeated freeze-thaw cycles.
<b>Protein Name</b>	Zinc finger protein 638
<b>Gene Name</b>	ZNF638
<b>Cellular localization</b>	Nucleus speckle .
<b>Purification</b>	The antibody was affinity-purified from rabbit antiserum by affinity-chromatography using epitope-specific immunogen.
<b>Clonality</b>	Polyclonal
<b>Concentration</b>	1 mg/ml
<b>Observed band</b>	220kD
<b>Human Gene ID</b>	27332
<b>Human Swiss-Prot Number</b>	Q14966
<b>Alternative Names</b>	ZNF638; NP220; ZFML; Zinc finger protein 638; Cutaneous T-cell lymphoma-associated antigen se33-1; CTCL-associated antigen se33-1; Nuclear protein 220; Zinc finger matrin-like protein zinc finger protein 638(ZNF638) Homo sapiens
<b>Background</b>	The protein encoded by this gene is a nucleoplasmic protein. It binds cytidine-rich sequences in



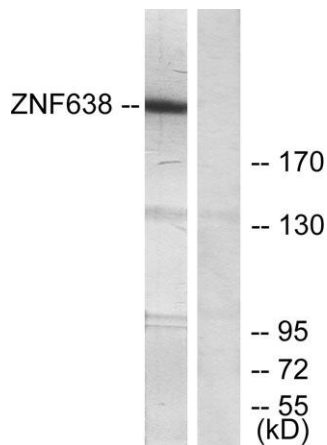
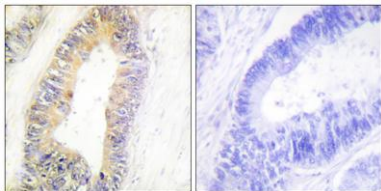


double-stranded DNA. This protein has three types of domains: MH1, MH2 (repeated three times) and MH3. It is associated with packaging, transferring, or processing transcripts. Multiple alternatively spliced transcript variants have been found for this gene, but the biological validity of some variants has not been determined. [provided by RefSeq, Jul 2008],



Western Blot analysis of various cells using NP220 Polyclonal Antibody

Immunohistochemistry analysis of paraffin-embedded human colon carcinoma tissue, using ZNF638 Antibody. The picture on the right is blocked with the synthesized peptide.



Western blot analysis of lysates from HepG2 cells, treated with serum 20% 15', using ZNF638 Antibody. The lane on the right is blocked with the synthesized peptide.

