



Neuromedin-U rabbit pAb

Cat No.:ES2933

For research use only

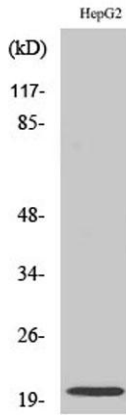
Overview

Product Name	Neuromedin-U rabbit pAb
Host species	Rabbit
Applications	WB;IHC;IF;ELISA
Species Cross-Reactivity	Human;Rat;Mouse;
Recommended dilutions	Western Blot: 1/500 - 1/2000. Immunohistochemistry: 1/100 - 1/300. ELISA: 1/40000. Not yet tested in other applications.
Immunogen	The antiserum was produced against synthesized peptide derived from human NMU. AA range:125-174
Specificity	Neuromedin-U Polyclonal Antibody detects endogenous levels of Neuromedin-U protein.
Formulation	Liquid in PBS containing 50% glycerol, 0.5% BSA and 0.02% sodium azide.
Storage	Store at -20°C. Avoid repeated freeze-thaw cycles.
Protein Name	Neuromedin-U
Gene Name	NMU
Cellular localization	Secreted.
Purification	The antibody was affinity-purified from rabbit antiserum by affinity-chromatography using epitope-specific immunogen.
Clonality	Polyclonal
Concentration	1 mg/ml
Observed band	22kD
Human Gene ID	10874
Human Swiss-Prot Number	P48645
Alternative Names	NMU; Neuromedin-U
Background	This gene encodes a member of the neuromedin family of neuropeptides. The encoded protein is a precursor that is proteolytically processed to generate a biologically active neuropeptide that plays a role in pain, stress, immune-mediated inflammatory diseases and feeding regulation.



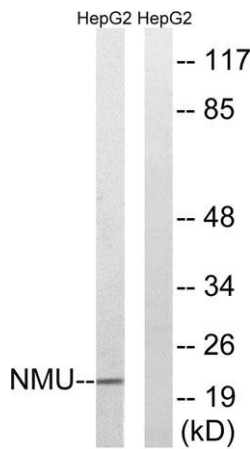
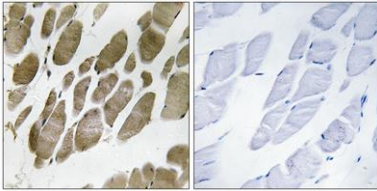


Increased expression of this gene was observed in renal, pancreatic and lung cancers. Alternative splicing results in multiple transcript variants encoding different isoforms. Some of these isoforms may undergo similar processing to generate the mature peptide. [provided by RefSeq, Jul 2015],



Western Blot analysis of various cells using Neuromedin-U Polyclonal Antibody diluted at 1:500

Immunohistochemistry analysis of paraffin-embedded human skeletal muscle tissue, using NMU Antibody. The picture on the right is blocked with the synthesized peptide.



Western blot analysis of lysates from HepG2 cells, using NMU Antibody. The lane on the right is blocked with the synthesized peptide.

