



# NBK rabbit pAb

Cat No.:ES2899

For research use only

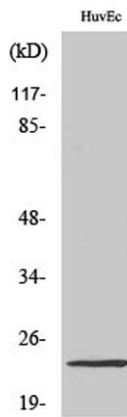
## Overview

<b>Product Name</b>	NBK rabbit pAb
<b>Host species</b>	Rabbit
<b>Applications</b>	WB;IHC;IF;ELISA
<b>Species Cross-Reactivity</b>	Human;Rat;Mouse;
<b>Recommended dilutions</b>	Western Blot: 1/500 - 1/2000. Immunohistochemistry: 1/100 - 1/300. Immunofluorescence: 1/200 - 1/1000. ELISA: 1/10000. Not yet tested in other applications.
<b>Immunogen</b>	The antiserum was produced against synthesized peptide derived from human BIK. AA range:18-67
<b>Specificity</b>	NBK Polyclonal Antibody detects endogenous levels of NBK protein.
<b>Formulation</b>	Liquid in PBS containing 50% glycerol, 0.5% BSA and 0.02% sodium azide.
<b>Storage</b>	Store at -20°C. Avoid repeated freeze-thaw cycles.
<b>Protein Name</b>	Bcl-2-interacting killer
<b>Gene Name</b>	BIK
<b>Cellular localization</b>	Endomembrane system; Single-pass membrane protein. Mitochondrion membrane ; Single-pass membrane protein . Around the nuclear envelope, and in cytoplasmic membranes.
<b>Purification</b>	The antibody was affinity-purified from rabbit antiserum by affinity-chromatography using epitope-specific immunogen.
<b>Clonality</b>	Polyclonal
<b>Concentration</b>	1 mg/ml
<b>Observed band</b>	30 25kD
<b>Human Gene ID</b>	638
<b>Human Swiss-Prot Number</b>	Q13323
<b>Alternative Names</b>	BIK; NBK; Bcl-2-interacting killer; Apoptosis inducer NBK; BIP1; BP4
<b>Background</b>	The protein encoded by this gene shares a critical BH3 domain with other death-promoting proteins,



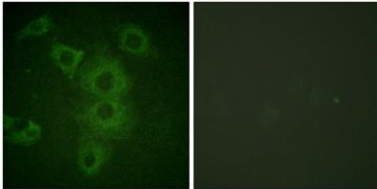


such as BID, BAK, BAD and BAX, that is required for its pro-apoptotic activity, and for interaction with anti-apoptotic members of the BCL2 family, and viral survival-promoting proteins. Since the activity of this protein is suppressed in the presence of survival-promoting proteins, it is suggested as a likely target for anti-apoptotic proteins. [provided by RefSeq, Sep 2011],

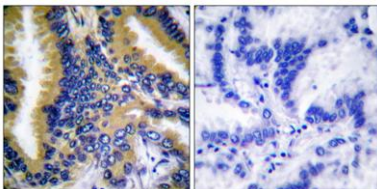


Western Blot analysis of various cells using NBK Polyclonal Antibody diluted at 1:500

Immunofluorescence analysis of HUVEC cells, using BIK Antibody. The picture on the right is blocked with the synthesized peptide.

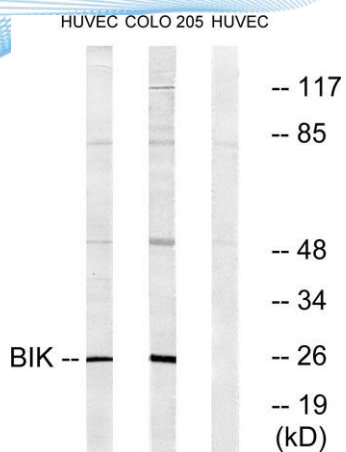


Immunohistochemistry analysis of paraffin-embedded human lung carcinoma tissue, using BIK Antibody. The picture on the right is blocked with the synthesized peptide.





**ELK Biotechnology**



Western blot analysis of lysates from HUVEC/COLO205, using BIK Antibody. The lane on the right is blocked with the synthesized peptide.



+86-27-59760950

[ELKbio@ELKbiotech.com](mailto:ELKbio@ELKbiotech.com)

[www.elkbiotech.com](http://www.elkbiotech.com)

23-2, No.388 Gaoxin 2nd Road, Wuhan East Lake Hi-tech Development Zone, Hubei, P.R.C