



# MRP-S35 rabbit pAb

Cat No.:ES2852

For research use only

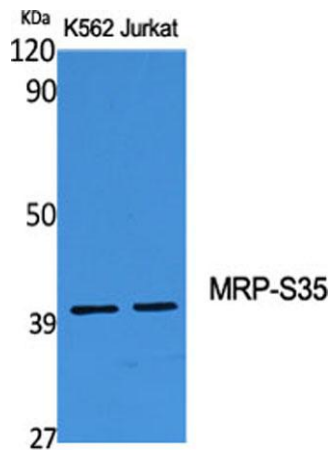
## Overview

|                                 |  |
|---------------------------------|--|
| <b>Product Name</b>             | MRP-S35 rabbit pAb   |
| <b>Host species</b>             | Rabbit   |
| <b>Applications</b>             | WB;IHC;IF;ELISA  |
| <b>Species Cross-Reactivity</b> | Human;Rat;Mouse;   |
| <b>Recommended dilutions</b>    | Western Blot: 1/500 - 1/2000.<br>Immunohistochemistry: 1/100 - 1/300. ELISA:<br>1/40000. Not yet tested in other applications.                                 |
| <b>Immunogen</b>                | The antiserum was produced against synthesized peptide derived from human MRPS35. AA range:211-260   |
| <b>Specificity</b>              | MRP-S35 Polyclonal Antibody detects endogenous levels of MRP-S35 protein.  |
| <b>Formulation</b>              | Liquid in PBS containing 50% glycerol, 0.5% BSA and 0.02% sodium azide.  |
| <b>Storage</b>                  | Store at -20°C. Avoid repeated freeze-thaw cycles.   |
| <b>Protein Name</b>             | 28S ribosomal protein S35 mitochondrial  |
| <b>Gene Name</b>                | MRPS35   |
| <b>Cellular localization</b>    | Mitochondrion .  |
| <b>Purification</b>             | The antibody was affinity-purified from rabbit antiserum by affinity-chromatography using epitope-specific immunogen.  |
| <b>Clonality</b>                | Polyclonal   |
| <b>Concentration</b>            | 1 mg/ml  |
| <b>Observed band</b>            | 40kD   |
| <b>Human Gene ID</b>            | 60488  |
| <b>Human Swiss-Prot Number</b>  | P82673   |
| <b>Alternative Names</b>        | MRPS35; MRPS28; HDCMD11P; MDS023; PSEC0213; 28S ribosomal protein S35; mitochondrial; MRP-S35; S35mt; 28S ribosomal protein S28, mitochondrial; MRP-S28; S28mt |
| <b>Background</b>               | Mammalian mitochondrial ribosomal proteins are encoded by nuclear genes and help in protein synthesis within the mitochondrion. Mitochondrial                  |

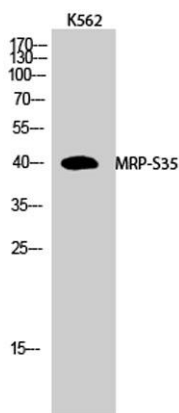




ribosomes (mitoribosomes) consist of a small 28S subunit and a large 39S subunit. They have an estimated 75% protein to rRNA composition compared to prokaryotic ribosomes, where this ratio is reversed. Another difference between mammalian mitoribosomes and prokaryotic ribosomes is that the latter contain a 5S rRNA. Among different species, the proteins comprising the mitoribosome differ greatly in sequence, and sometimes in biochemical properties, which prevents easy recognition by sequence homology. This gene encodes a 28S subunit protein that has had confusing nomenclature in the literature. Alternatively spliced transcript variants encoding different isoforms have been found for this gene. Pseudogenes corresponding to this gene are found on



Western Blot analysis of various cells using MRP-S35 Polyclonal Antibody

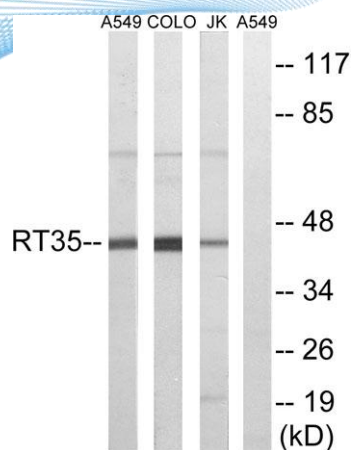


Western Blot analysis of K562 cells using MRP-S35 Polyclonal Antibody

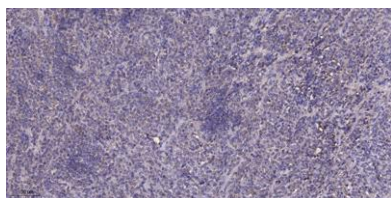




**ELK Biotechnology**



Western blot analysis of lysates from Jurkat, COLO, and A549 cells, using MRPS35 Antibody. The lane on the right is blocked with the synthesized peptide.



Immunohistochemical analysis of paraffin-embedded human Colon cancer. 1, Antibody was diluted at 1:200(4° overnight). 2, Tris-EDTA,pH9.0 was used for antigen retrieval. 3,Secondary antibody was diluted at 1:200(room temperature, 45min).



+86-27-59760950

[ELKbio@ELKbiotech.com](mailto:ELKbio@ELKbiotech.com)

[www.elkbiotech.com](http://www.elkbiotech.com)

23-2, No.388 Gaoxin 2nd Road,Wuhan East Lake Hi-tech Development Zone, Hubei , P.R.C