



MRP-L10 rabbit pAb

Cat No.:ES2826

For research use only

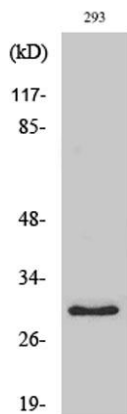
Overview

Product Name	MRP-L10 rabbit pAb
Host species	Rabbit
Applications	WB;IHC;IF;ELISA
Species Cross-Reactivity	Human;Rat;Mouse;
Recommended dilutions	Western Blot: 1/500 - 1/2000. Immunohistochemistry: 1/100 - 1/300. ELISA: 1/20000. Not yet tested in other applications.
Immunogen	The antiserum was produced against synthesized peptide derived from human MRPL10. AA range:211-260
Specificity	MRP-L10 Polyclonal Antibody detects endogenous levels of MRP-L10 protein.
Formulation	Liquid in PBS containing 50% glycerol, 0.5% BSA and 0.02% sodium azide.
Storage	Store at -20°C. Avoid repeated freeze-thaw cycles.
Protein Name	39S ribosomal protein L10 mitochondrial
Gene Name	MRPL10
Cellular localization	Mitochondrion .
Purification	The antibody was affinity-purified from rabbit antiserum by affinity-chromatography using epitope-specific immunogen.
Clonality	Polyclonal
Concentration	1 mg/ml
Observed band	29kD
Human Gene ID	124995
Human Swiss-Prot Number	Q7Z7H8
Alternative Names	MRPL10; MRPL8; RPML8; 39S ribosomal protein L10; mitochondrial; L10mt; MRP-L10; 39S ribosomal protein L8, mitochondrial; L8mt; MRP-L8
Background	Mammalian mitochondrial ribosomal proteins are encoded by nuclear genes and help in protein synthesis within the mitochondrion. Mitochondrial ribosomes (mitoribosomes) consist of a small 28S

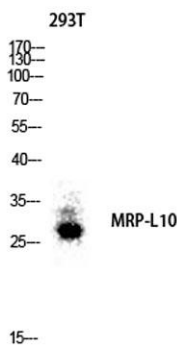




subunit and a large 39S subunit. They have an estimated 75% protein to rRNA composition compared to prokaryotic ribosomes, where this ratio is reversed. Another difference between mammalian mitoribosomes and prokaryotic ribosomes is that the latter contain a 5S rRNA. Among different species, the proteins comprising the mitoribosome differ greatly in sequence, and sometimes in biochemical properties, which prevents easy recognition by sequence homology. This gene encodes a 39S subunit protein. Sequence analysis identified three transcript variants that encode two different isoforms. A pseudogene corresponding to this gene is found on chromosome 5q. [provided by RefSeq, Nov 2010],

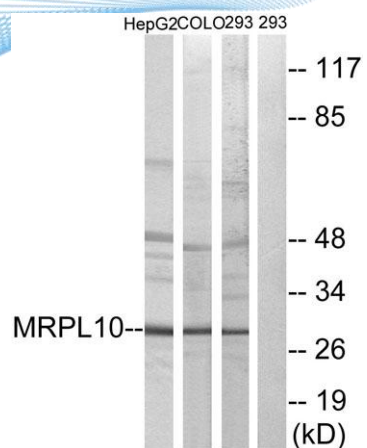


Western Blot analysis of various cells using MRP-L10 Polyclonal Antibody diluted at 1:1000

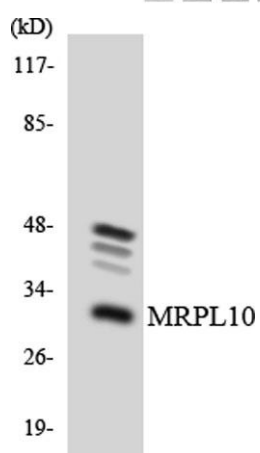


Western blot analysis of 293T lysis using MRP-L10 antibody. Antibody was diluted at 1:1000





Western blot analysis of lysates from 293, HepG2, and COLO cells, using MRPL10 Antibody. The lane on the right is blocked with the synthesized peptide.



Western blot analysis of the lysates from HT-29 cells using MRPL10 antibody.

