



# Mnk1 rabbit pAb

Cat No.:ES2808

For research use only

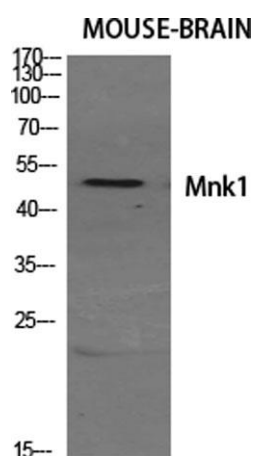
## Overview

<b>Product Name</b>	Mnk1 rabbit pAb
<b>Host species</b>	Rabbit
<b>Applications</b>	WB;IHC;IF;ELISA
<b>Species Cross-Reactivity</b>	Human;Mouse
<b>Recommended dilutions</b>	Western Blot: 1/500 - 1/2000. Immunohistochemistry: 1/100 - 1/300. ELISA: 1/20000. Not yet tested in other applications.
<b>Immunogen</b>	The antiserum was produced against synthesized peptide derived from human MKNK1. AA range:111-160
<b>Specificity</b>	Mnk1 Polyclonal Antibody detects endogenous levels of Mnk1 protein.
<b>Formulation</b>	Liquid in PBS containing 50% glycerol, 0.5% BSA and 0.02% sodium azide.
<b>Storage</b>	Store at -20°C. Avoid repeated freeze-thaw cycles.
<b>Protein Name</b>	MAP kinase-interacting serine/threonine-protein kinase 1
<b>Gene Name</b>	MKNK1
<b>Cellular localization</b>	[Isoform 2]: Cytoplasm.; [Isoform 3]: Cytoplasm. Nucleus.
<b>Purification</b>	The antibody was affinity-purified from rabbit antiserum by affinity-chromatography using epitope-specific immunogen.
<b>Clonality</b>	Polyclonal
<b>Concentration</b>	1 mg/ml
<b>Observed band</b>	51kD
<b>Human Gene ID</b>	8569
<b>Human Swiss-Prot Number</b>	Q9BUB5
<b>Alternative Names</b>	MKNK1; MNK1; MAP kinase-interacting serine/threonine-protein kinase 1; MAP kinase signal-integrating kinase 1; MAPK signal-integrating kinase 1; Mnk1
<b>Background</b>	MAP kinase interacting serine/threonine kinase

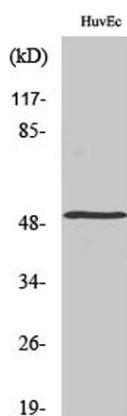




1(MKNK1) Homo sapiens This gene encodes a Ser/Thr protein kinase that interacts with, and is activated by ERK1 and p38 mitogen-activated protein kinases, and thus may play a role in the response to environmental stress and cytokines. This kinase may also regulate transcription by phosphorylating eIF4E via interaction with the C-terminal region of eIF4G. Alternatively spliced transcript variants have been noted for this gene. [provided by RefSeq, Jan 2012],

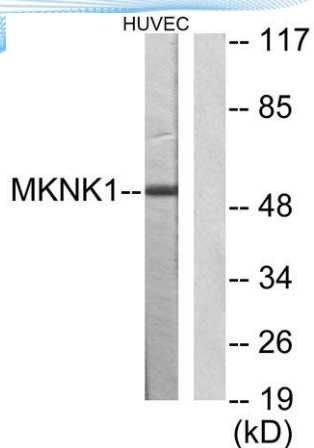


Western Blot analysis of various cells using Mnk1  
Polyclonal Antibody diluted at 1:500

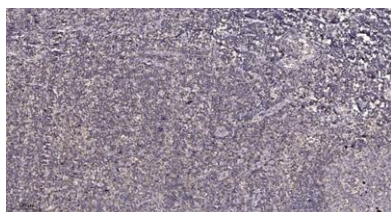


Western Blot analysis of HuvEc cells using Mnk1  
Polyclonal Antibody diluted at 1:500





Western blot analysis of lysates from HUVEC cells, using MKNK1 Antibody. The lane on the right is blocked with the synthesized peptide.



Immunohistochemical analysis of paraffin-embedded human tonsil. 1, Antibody was diluted at 1:200(4° overnight). 2, Tris-EDTA,pH9.0 was used for antigen retrieval. 3,Secondary antibody was diluted at 1:200(room temperature, 30min).

