

# MN1 rabbit pAb

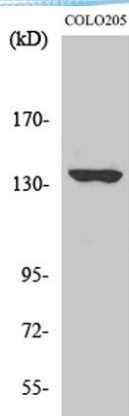
Cat No.:ES2807

For research use only

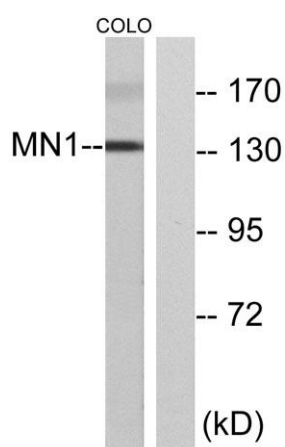
## Overview

Product Name	MN1 rabbit pAb
Host species	Rabbit
Applications	WB;ELISA;IHC
Species Cross-Reactivity	Human;Rat;Mouse;
Recommended dilutions	WB 1:500-2000;IHC-p 1:50-300; ELISA 2000-20000
Immunogen	The antiserum was produced against synthesized peptide derived from human MN1. AA range:821-870
Specificity	MN1 Polyclonal Antibody detects endogenous levels of MN1 protein.
Formulation	Liquid in PBS containing 50% glycerol, 0.5% BSA and 0.02% sodium azide.
Storage	Store at -20°C. Avoid repeated freeze-thaw cycles.
Protein Name	Probable tumor suppressor protein MN1
Gene Name	MN1
Cellular localization	Nucleus .
Purification	The antibody was affinity-purified from rabbit antiserum by affinity-chromatography using epitope-specific immunogen.
Clonality	Polyclonal
Concentration	1 mg/ml
Observed band	135kD
Human Gene ID	4330
Human Swiss-Prot Number	Q10571
Alternative Names	MN1; Probable tumor suppressor protein MN1
Background	Meningioma 1 (MN1) contains two sets of CAG repeats. It is disrupted by a balanced translocation (4;22) in a meningioma, and its inactivation may contribute to meningioma 32 pathogenesis. [provided by RefSeq, Jul 2008],

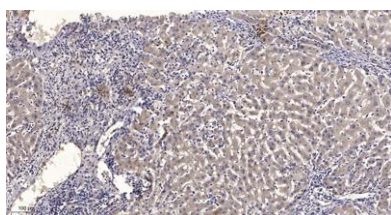




Western Blot analysis of various cells using MN1  
Polyclonal Antibody diluted at 1:2000



Western blot analysis of lysates from COLO cells, using  
MN1 Antibody. The lane on the right is blocked with the  
synthesized peptide.



Immunohistochemical analysis of paraffin-embedded  
human liver cancer. 1, Antibody was diluted at 1:200(4°  
overnight). 2, Tris-EDTA,pH9.0 was used for antigen  
retrieval. 3,Secondary antibody was diluted at 1:200(room  
temperature, 45min).

