

# Menin rabbit pAb

Cat No.:ES2778

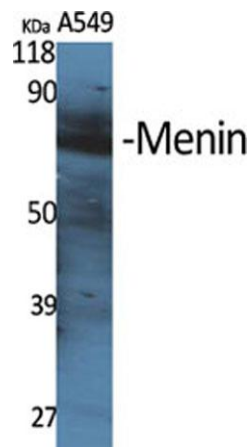
For research use only

## Overview

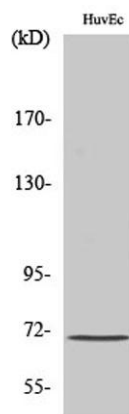
Product Name	Menin rabbit pAb
Host species	Rabbit
Applications	WB;IHC;IF;ELISA
Species Cross-Reactivity	Human;Mouse;Rat
Recommended dilutions	Western Blot: 1/500 - 1/2000. Immunohistochemistry: 1/100 - 1/300. ELISA: 1/20000. Not yet tested in other applications.
Immunogen	The antiserum was produced against synthesized peptide derived from human MEN1. AA range:181-230
Specificity	Menin Polyclonal Antibody detects endogenous levels of Menin protein.
Formulation	Liquid in PBS containing 50% glycerol, 0.5% BSA and 0.02% sodium azide.
Storage	Store at -20°C. Avoid repeated freeze-thaw cycles.
Protein Name	Menin
Gene Name	MEN1
Cellular localization	Nucleus . Concentrated in nuclear body-like structures. Relocates to the nuclear matrix upon gamma irradiation.
Purification	The antibody was affinity-purified from rabbit antiserum by affinity-chromatography using epitope-specific immunogen.
Clonality	Polyclonal
Concentration	1 mg/ml
Observed band	67kD
Human Gene ID	4221
Human Swiss-Prot Number	O00255
Alternative Names	MEN1; SCG2; Menin
Background	This gene encodes menin, a putative tumor suppressor associated with a syndrome known as multiple endocrine neoplasia type 1. In vitro studies have shown menin is localized to the nucleus,



possesses two functional nuclear localization signals, and inhibits transcriptional activation by JunD, however, the function of this protein is not known. Two messages have been detected on northern blots but the larger message has not been characterized. Alternative splicing results in multiple transcript variants. [provided by RefSeq, Oct 2008],



Western Blot analysis of various cells using Menin Polyclonal Antibody diluted at 1:500



Western Blot analysis of HuvEc cells using Menin Polyclonal Antibody diluted at 1:500



Immunohistochemical analysis of paraffin-embedded human tonsil. 1, Antibody was diluted at 1:200(4° overnight). 2, Tris-EDTA,pH9.0 was used for antigen retrieval. 3,Secondary antibody was diluted at 1:200(room temperature, 45min).

