



Mat1 rabbit pAb

Cat No.:ES2750

For research use only

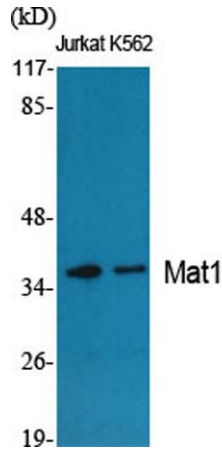
Overview

Product Name	Mat1 rabbit pAb
Host species	Rabbit
Applications	WB;IHC;IF;ELISA
Species Cross-Reactivity	Human;Mouse;Rat
Recommended dilutions	Western Blot: 1/500 - 1/2000. Immunohistochemistry: 1/100 - 1/300. ELISA: 1/20000. Not yet tested in other applications.
Immunogen	The antiserum was produced against synthesized peptide derived from human MAT1. AA range:91-140
Specificity	Mat1 Polyclonal Antibody detects endogenous levels of Mat1 protein.
Formulation	Liquid in PBS containing 50% glycerol, 0.5% BSA and 0.02% sodium azide.
Storage	Store at -20°C. Avoid repeated freeze-thaw cycles.
Protein Name	CDK-activating kinase assembly factor MAT1
Gene Name	MNAT1
Cellular localization	Nucleus.
Purification	The antibody was affinity-purified from rabbit antiserum by affinity-chromatography using epitope-specific immunogen.
Clonality	Polyclonal
Concentration	1 mg/ml
Observed band	36kD
Human Gene ID	4331
Human Swiss-Prot Number	P51948
Alternative Names	MNAT1; CAP35; MAT1; RNF66; CDK-activating kinase assembly factor MAT1; CDK7/cyclin-H assembly factor; Cyclin-G1-interacting protein; Menage a trois; RING finger protein 66; RING finger protein MAT1; p35; p36
Background	The protein encoded by this gene, along with cyclin H and CDK7, forms the CDK-activating kinase (CAK)

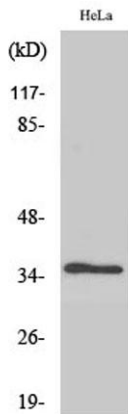




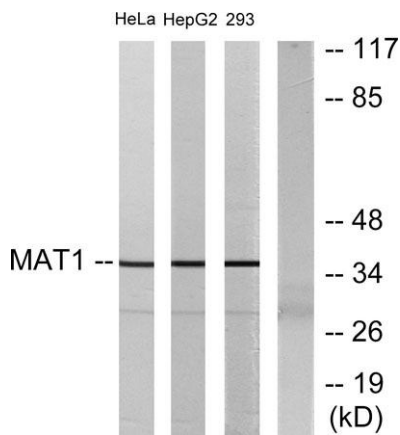
enzymatic complex. This complex activates several cyclin-associated kinases and can also associate with TFIIF to activate transcription by RNA polymerase II. Two transcript variants encoding different isoforms have been found for this gene. [provided by RefSeq, Sep 2011],



Western Blot analysis of various cells using Mat1 Polyclonal Antibody



Western Blot analysis of 293 cells using Mat1 Polyclonal Antibody

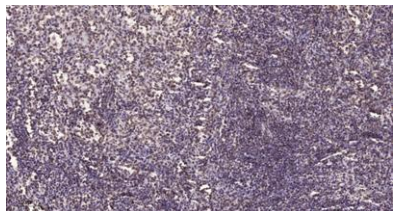


Western blot analysis of lysates from HeLa, HepG2, and 293 cells, using MAT1 Antibody. The lane on the right is blocked with the synthesized peptide.





ELK Biotechnology



Immunohistochemical analysis of paraffin-embedded human spleen. 1, Tris-EDTA, pH 9.0 was used for antigen retrieval. 2 Antibody was diluted at 1:200 (4° overnight). 3, Secondary antibody was diluted at 1:200 (room temperature, 45 min).



+86-27-59760950

ELKbio@ELKbiotech.com

www.elkbiotech.com

23-2, No.388 Gaoxin 2nd Road, Wuhan East Lake Hi-tech Development Zone, Hubei, P.R.C