



# LUC7L2 rabbit pAb

Cat No.:ES2731

For research use only

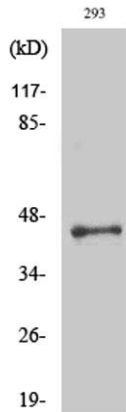
## Overview

<b>Product Name</b>	LUC7L2 rabbit pAb
<b>Host species</b>	Rabbit
<b>Applications</b>	WB;IHC;IF;ELISA
<b>Species Cross-Reactivity</b>	Human;Mouse;Rat
<b>Recommended dilutions</b>	Western Blot: 1/500 - 1/2000. Immunohistochemistry: 1/100 - 1/300. ELISA: 1/40000. Not yet tested in other applications.
<b>Immunogen</b>	The antiserum was produced against synthesized peptide derived from human LUC7L2. AA range:129-178
<b>Specificity</b>	LUC7L2 Polyclonal Antibody detects endogenous levels of LUC7L2 protein.
<b>Formulation</b>	Liquid in PBS containing 50% glycerol, 0.5% BSA and 0.02% sodium azide.
<b>Storage</b>	Store at -20°C. Avoid repeated freeze-thaw cycles.
<b>Protein Name</b>	Putative RNA-binding protein Luc7-like 2
<b>Gene Name</b>	LUC7L2
<b>Cellular localization</b>	Nucleus speckle . Nucleus, nucleoplasm . Colocalizes with SCNM1 and SNRNP70 in nuclear speckles. .
<b>Purification</b>	The antibody was affinity-purified from rabbit antiserum by affinity-chromatography using epitope-specific immunogen.
<b>Clonality</b>	Polyclonal
<b>Concentration</b>	1 mg/ml
<b>Observed band</b>	47kD
<b>Human Gene ID</b>	51631
<b>Human Swiss-Prot Number</b>	Q9Y383
<b>Alternative Names</b>	LUC7L2; CGI-59; CGI-74; Putative RNA-binding protein Luc7-like 2
<b>Background</b>	This gene encodes a protein that contains a C2H2-type zinc finger, coiled-coil region and arginine, serine-rich (RS) domain. A similar protein in mouse interacts with sodium channel modifier 1,





and the encoded protein may be involved in the recognition of non-consensus splice donor sites in association with the U1 snRNP spliceosomal subunit. Alternatively spliced transcript variants encoding multiple isoforms have been observed for this gene. [provided by RefSeq, Sep 2011],



Western Blot analysis of various cells using LUC7L2 Polyclonal Antibody

Immunohistochemistry analysis of paraffin-embedded human colon carcinoma tissue, using LUC7L2 Antibody. The picture on the right is blocked with the synthesized peptide.

