



Kv3.4 rabbit pAb

Cat No.:ES2691

For research use only

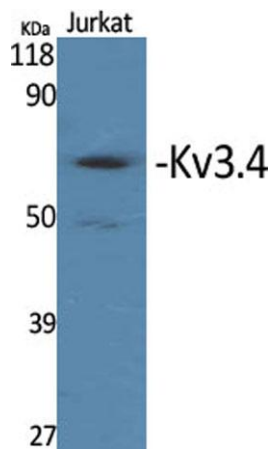
Overview

Product Name	Kv3.4 rabbit pAb
Host species	Rabbit
Applications	WB;IHC;IF;ELISA
Species Cross-Reactivity	Human;Mouse;Monkey
Recommended dilutions	Western Blot: 1/500 - 1/2000. Immunohistochemistry: 1/100 - 1/300. Immunofluorescence: 1/200 - 1/1000. ELISA: 1/20000. Not yet tested in other applications.
Immunogen	The antiserum was produced against synthesized peptide derived from human KCNC4. AA range:1-50
Specificity	Kv3.4 Polyclonal Antibody detects endogenous levels of Kv3.4 protein.
Formulation	Liquid in PBS containing 50% glycerol, 0.5% BSA and 0.02% sodium azide.
Storage	Store at -20°C. Avoid repeated freeze-thaw cycles.
Protein Name	Potassium voltage-gated channel subfamily C member 4
Gene Name	KCNC4
Cellular localization	Membrane; Multi-pass membrane protein.
Purification	The antibody was affinity-purified from rabbit antiserum by affinity-chromatography using epitope-specific immunogen.
Clonality	Polyclonal
Concentration	1 mg/ml
Observed band	70kD
Human Gene ID	3749
Human Swiss-Prot Number	Q03721
Alternative Names	KCNC4; Potassium voltage-gated channel subfamily C member 4; KSHIIC; Voltage-gated potassium channel subunit Kv3.4
Background	The Shaker gene family of Drosophila encodes components of voltage-gated potassium channels and is comprised of four subfamilies. Based on

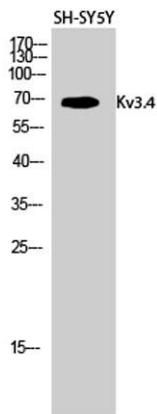




sequence similarity, this gene is similar to the Shaw subfamily. The protein encoded by this gene belongs to the delayed rectifier class of channel proteins and is an integral membrane protein that mediates the voltage-dependent potassium ion permeability of excitable membranes. It generates atypical voltage-dependent transient current that may be important for neuronal excitability. Multiple transcript variants have been found for this gene. [provided by RefSeq, Jul 2010],



Western Blot analysis of various cells using Kv3.4
Polyclonal Antibody diluted at 1:500



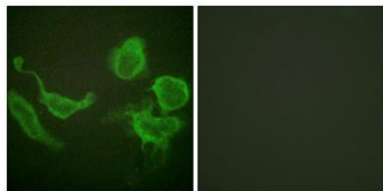
Western Blot analysis of SH-SY5Y cells using Kv3.4
Polyclonal Antibody diluted at 1:500



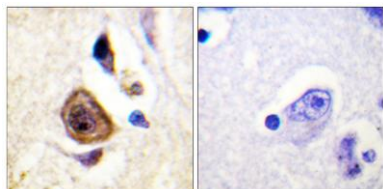


ELK Biotechnology

Immunofluorescence analysis of HeLa cells, using Kv3.4/KCNC4 Antibody. The picture on the right is blocked with the synthesized peptide.



Immunohistochemistry analysis of paraffin-embedded human brain, using Kv3.4/KCNC4 Antibody. The picture on the right is blocked with the synthesized peptide.



+86-27-59760950

ELKbio@ELKbiotech.com

www.elkbiotech.com

23-2, No.388 Gaoxin 2nd Road, Wuhan East Lake Hi-tech Development Zone, Hubei, P.R.C