



# KIF4A rabbit pAb

Cat No.:ES2674

For research use only

## Overview

<b>Product Name</b>	KIF4A rabbit pAb
<b>Host species</b>	Rabbit
<b>Applications</b>	WB;ELISA;IHC
<b>Species Cross-Reactivity</b>	Human;Rat;Mouse;
<b>Recommended dilutions</b>	WB 1:500-2000;IHC-p 1:50-300; ELISA 2000-20000
<b>Immunogen</b>	The antiserum was produced against synthesized peptide derived from human KIF4A. AA range:1171-1220
<b>Specificity</b>	KIF4A Polyclonal Antibody detects endogenous levels of KIF4A protein.
<b>Formulation</b>	Liquid in PBS containing 50% glycerol, 0.5% BSA and 0.02% sodium azide.
<b>Storage</b>	Store at -20°C. Avoid repeated freeze-thaw cycles.
<b>Protein Name</b>	Chromosome-associated kinesin KIF4A
<b>Gene Name</b>	KIF4A
<b>Cellular localization</b>	Nucleus matrix . Cytoplasm . Cytoplasm, cytoskeleton, spindle . Midbody . Chromosome . Associates with chromosomes at all stage of mitosis (PubMed:11736643, PubMed:15297875, PubMed:15625105). Chromatin localization is dependent on iron-sulfur cluster binding (PubMed:29848660). In anaphase, associates with the mitotic spindle midzone (PubMed:15297875). In telophase and cytokinesis, co-localizes with CIAO2B at the spindle midzone and midbody (PubMed:29848660, PubMed:15297875). Co-localizes with PRC1 in early mitosis and at the spindle midzone from anaphase B to telophase (PubMed:15297875, PubMed:15625105). Does not localize to the nucleolus (PubMed:11736643). .
<b>Purification</b>	The antibody was affinity-purified from rabbit antiserum by affinity-chromatography using epitope-specific immunogen.

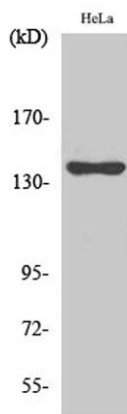




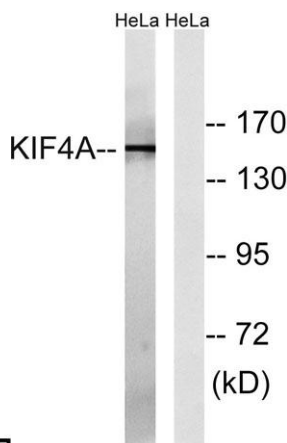
<b>Clonality</b>	Polyclonal
<b>Concentration</b>	1 mg/ml
<b>Observed band</b>	140kD
<b>Human Gene ID</b>	24137
<b>Human Swiss-Prot Number</b>	O95239
<b>Alternative Names</b>	KIF4A; KIF4; Chromosome-associated kinesin KIF4A; Chromokinesin-A

**Background**

kinesin family member 4A(KIF4A) Homo sapiens  
This gene encodes a member of the kinesin 4 subfamily of kinesin related proteins. The encoded protein is an ATP dependent microtubule-based motor protein that is involved in the intracellular transport of membranous organelles. This protein also associates with condensed chromosome arms and may be involved in maintaining chromosome integrity during mitosis. This protein may also be involved in the organization of the central spindle prior to cytokinesis. A pseudogene of this gene is found on chromosome X.[provided by RefSeq, Mar 2010],



Western Blot analysis of various cells using KIF4A Polyclonal Antibody diluted at 1:500

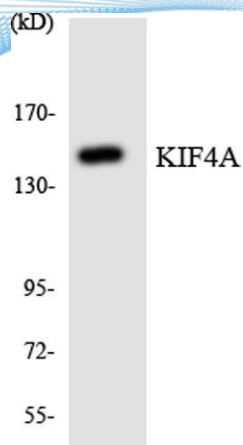


Western blot analysis of lysates from HeLa cells, using KIF4A Antibody. The lane on the right is blocked with the synthesized peptide.

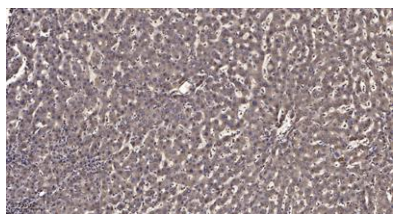




**ELK Biotechnology**



Western blot analysis of the lysates from HeLa cells using KIF4A antibody.



Immunohistochemical analysis of paraffin-embedded human liver cancer. 1, Antibody was diluted at 1:200(4° overnight). 2, Tris-EDTA,pH9.0 was used for antigen retrieval. 3,Secondary antibody was diluted at 1:200(room temperature, 45min).



+86-27-59760950

ELKbio@ELKbiotech.com

www.elkbiotech.com

23-2, No.388 Gaoxin 2nd Road,Wuhan East Lake Hi-tech Development Zone, Hubei , P.R.C