



IL-20R α rabbit pAb

Cat No.:ES2612

For research use only

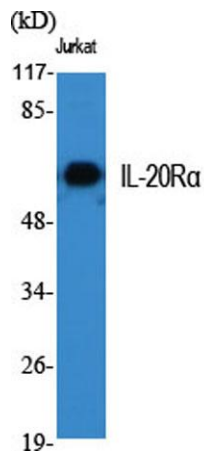
Overview

Product Name	IL-20R α rabbit pAb
Host species	Rabbit
Applications	WB;IHC;IF;ELISA
Species Cross-Reactivity	Human;Rat;Mouse;
Recommended dilutions	Western Blot: 1/500 - 1/2000. Immunohistochemistry: 1/100 - 1/300. ELISA: 1/40000. Not yet tested in other applications.
Immunogen	The antiserum was produced against synthesized peptide derived from human IL-20R α . AA range:173-222
Specificity	IL-20R α Polyclonal Antibody detects endogenous levels of IL-20R α protein.
Formulation	Liquid in PBS containing 50% glycerol, 0.5% BSA and 0.02% sodium azide.
Storage	Store at -20°C. Avoid repeated freeze-thaw cycles.
Protein Name	Interleukin-20 receptor subunit alpha
Gene Name	IL20RA
Cellular localization	Membrane ; Single-pass type I membrane protein .
Purification	The antibody was affinity-purified from rabbit antiserum by affinity-chromatography using epitope-specific immunogen.
Clonality	Polyclonal
Concentration	1 mg/ml
Observed band	62kD
Human Gene ID	53832
Human Swiss-Prot Number	Q9UHF4
Alternative Names	IL20RA; Interleukin-20 receptor subunit alpha; IL-20 receptor subunit alpha; IL-20R-alpha; IL-20RA; Cytokine receptor class-II member 8; Cytokine receptor family 2 member 8; CRF2-8; IL-20R1; ZcytoR7
Background	This gene encodes a member of the type II cytokine receptor family. The encoded protein is a subunit of

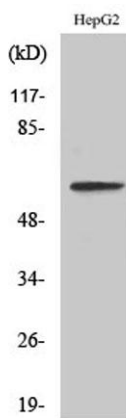




the receptor for interleukin 20, a cytokine that may be involved in epidermal function. The interleukin 20 receptor is a heterodimeric complex consisting of the encoded protein and interleukin 20 receptor beta. This gene and interleukin 20 receptor beta are highly expressed in skin, and are upregulated in psoriasis. Alternative splicing results in multiple transcript variants. [provided by RefSeq, Jul 2013],

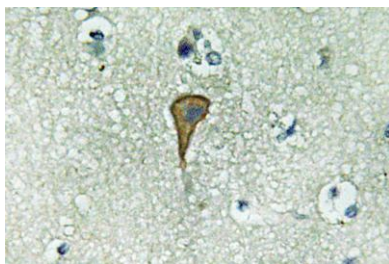


Western Blot analysis of various cells using IL-20R α Polyclonal Antibody



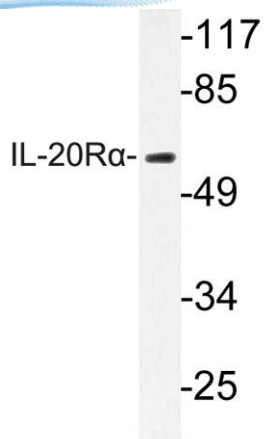
Western Blot analysis of LOVO cells using IL-20R α Polyclonal Antibody

Immunohistochemistry analysis of IL-20R α antibody in paraffin-embedded human brain tissue.





ELK Biotechnology



Western blot analysis of lysate from HepG2 cells, using IL-20R α antibody.



+86-27-59760950

ELKbio@ELKbiotech.com

www.elkbiotech.com

23-2, No.388 Gaoxin 2nd Road, Wuhan East Lake Hi-tech Development Zone, Hubei, P.R.C.