



# GPR152 rabbit pAb

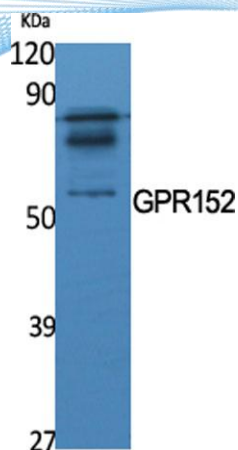
Cat No.:ES2455

For research use only

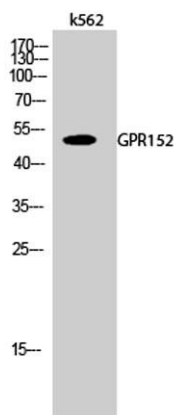
## Overview

Product Name	GPR152 rabbit pAb
Host species	Rabbit
Applications	WB;IF;ELISA
Species Cross-Reactivity	Human;Rat;Mouse;
Recommended dilutions	Western Blot: 1/500 - 1/2000. Immunofluorescence: 1/200 - 1/1000. ELISA: 1/20000. Not yet tested in other applications.
Immunogen	The antiserum was produced against synthesized peptide derived from human GPR152. AA range:10-59
Specificity	GPR152 Polyclonal Antibody detects endogenous levels of GPR152 protein.
Formulation	Liquid in PBS containing 50% glycerol, 0.5% BSA and 0.02% sodium azide.
Storage	Store at -20°C. Avoid repeated freeze-thaw cycles.
Protein Name	Probable G-protein coupled receptor 152
Gene Name	GPR152
Cellular localization	Cell membrane; Multi-pass membrane protein.
Purification	The antibody was affinity-purified from rabbit antiserum by affinity-chromatography using epitope-specific immunogen.
Clonality	Polyclonal
Concentration	1 mg/ml
Observed band	51kD
Human Gene ID	390212
Human Swiss-Prot Number	Q8TDT2
Alternative Names	GPR152; PGR5; Probable G-protein coupled receptor 152; G-protein coupled receptor PGR5
Background	function:Orphan receptor.,similarity:Belongs to the G-protein coupled receptor 1 family.,

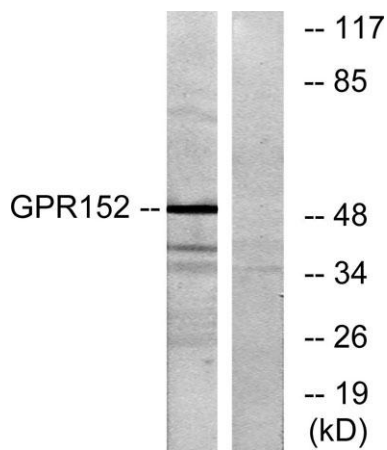




Western Blot analysis of various cells using GPR152 Polyclonal Antibody



Western Blot analysis of k562 cells using GPR152 Polyclonal Antibody



Western blot analysis of lysates from Jurkat cells, using GPR152 Antibody. The lane on the right is blocked with the synthesized peptide.

