

GPR137C rabbit pAb

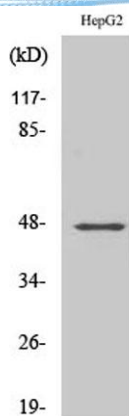
Cat No.:ES2453

For research use only

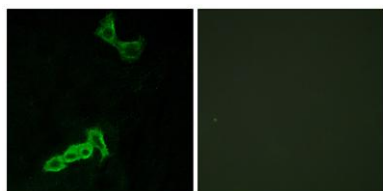
Overview

Product Name	GPR137C rabbit pAb
Host species	Rabbit
Applications	WB;IHC;IF;ELISA
Species Cross-Reactivity	Human;Rat;Mouse;
Recommended dilutions	Western Blot: 1/500 - 1/2000. Immunohistochemistry: 1/100 - 1/300. Immunofluorescence: 1/200 - 1/1000. ELISA: 1/10000. Not yet tested in other applications.
Immunogen	The antiserum was produced against synthesized peptide derived from human GPR137C. AA range:256-305
Specificity	GPR137C Polyclonal Antibody detects endogenous levels of GPR137C protein.
Formulation	Liquid in PBS containing 50% glycerol, 0.5% BSA and 0.02% sodium azide.
Storage	Store at -20°C. Avoid repeated freeze-thaw cycles.
Protein Name	Integral membrane protein GPR137C
Gene Name	GPR137C
Cellular localization	Lysosome membrane ; Multi-pass membrane protein .
Purification	The antibody was affinity-purified from rabbit antiserum by affinity-chromatography using epitope-specific immunogen.
Clonality	Polyclonal
Concentration	1 mg/ml
Observed band	45kD
Human Gene ID	283554
Human Swiss-Prot Number	Q8N3F9
Alternative Names	GPR137C; TM7SF1L2; Integral membrane protein GPR137C; Transmembrane 7 superfamily member 1-like 2 protein
Background	similarity:Belongs to the GPR137 family.,

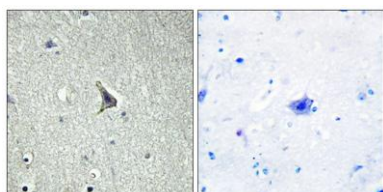




Western Blot analysis of various cells using GPR137C Polyclonal Antibody

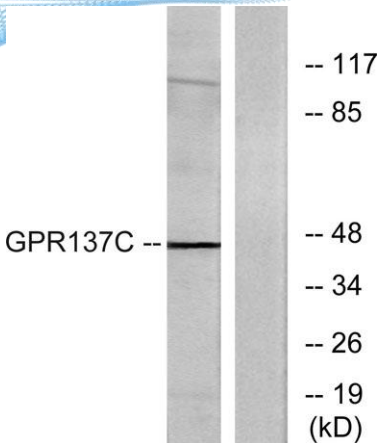


Immunofluorescence analysis of MCF7 cells, using GPR137C Antibody. The picture on the right is blocked with the synthesized peptide.



Immunohistochemistry analysis of paraffin-embedded human brain tissue, using GPR137C Antibody. The picture on the right is blocked with the synthesized peptide.





Western blot analysis of lysates from HepG2 cells, using GPR137C Antibody. The lane on the right is blocked with the synthesized peptide.

