



Glucosidase II β rabbit pAb

Cat No.:ES2434

For research use only

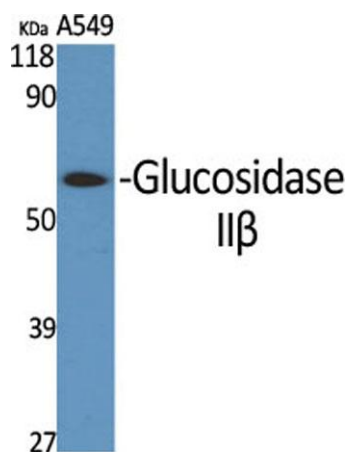
Overview

Product Name	Glucosidase II β rabbit pAb
Host species	Rabbit
Applications	WB;IF;ELISA
Species Cross-Reactivity	Human;Mouse
Recommended dilutions	Western Blot: 1/500 - 1/2000. Immunofluorescence: 1/200 - 1/1000. ELISA: 1/10000. Not yet tested in other applications.
Immunogen	The antiserum was produced against synthesized peptide derived from human GLU2B. AA range:81-130
Specificity	Glucosidase II β Polyclonal Antibody detects endogenous levels of Glucosidase II β protein.
Formulation	Liquid in PBS containing 50% glycerol, 0.5% BSA and 0.02% sodium azide.
Storage	Store at -20°C. Avoid repeated freeze-thaw cycles.
Protein Name	Glucosidase 2 subunit beta
Gene Name	PRKCSH
Cellular localization	Endoplasmic reticulum .
Purification	The antibody was affinity-purified from rabbit antiserum by affinity-chromatography using epitope-specific immunogen.
Clonality	Polyclonal
Concentration	1 mg/ml
Observed band	59kD
Human Gene ID	5589
Human Swiss-Prot Number	P14314
Alternative Names	PRKCSH; G19P1; Glucosidase 2 subunit beta; 80K-H protein; Glucosidase II subunit beta; Protein kinase C substrate 60.1 kDa protein heavy chain; PKCSH
Background	This gene encodes the beta-subunit of glucosidase II, an N-linked glycan-processing enzyme in the endoplasmic reticulum. The encoded protein is an acidic phosphoprotein known to be a substrate for

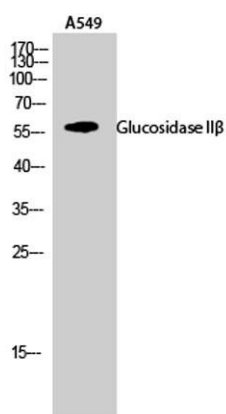




protein kinase C. Mutations in this gene have been associated with the autosomal dominant polycystic liver disease. Alternative splicing results in multiple transcript variants. [provided by RefSeq, Jan 2014],

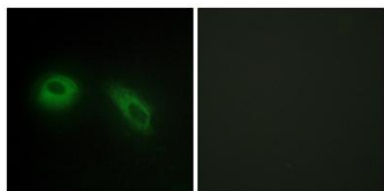


Western Blot analysis of various cells using Glucosidase IIβ Polyclonal Antibody



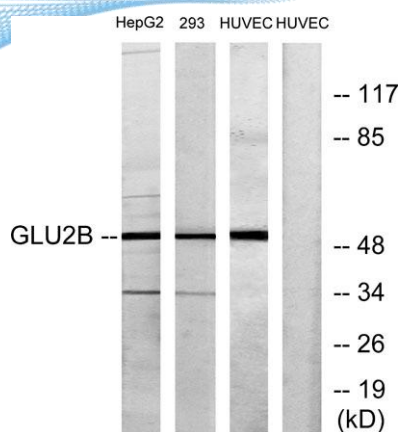
Western Blot analysis of A549 cells using Glucosidase IIβ Polyclonal Antibody

Immunofluorescence analysis of HeLa cells, using GLU2B Antibody. The picture on the right is blocked with the synthesized peptide.





ELK Biotechnology



Western blot analysis of lysates from HepG2, 293, and HUVEC cells, using GLU2B Antibody. The lane on the right is blocked with the synthesized peptide.



+86-27-59760950

ELKbio@ELKbiotech.com

www.elkbiotech.com

23-2, No.388 Gaoxin 2nd Road,Wuhan East Lake Hi-tech Development Zone, Hubei , P.R.C