

# GCP6 rabbit pAb

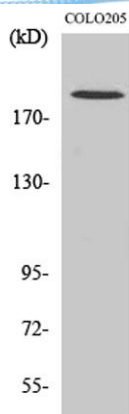
Cat No.:ES2413

For research use only

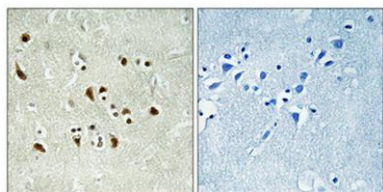
## Overview

Product Name	GCP6 rabbit pAb
Host species	Rabbit
Applications	WB;IHC;IF;ELISA
Species Cross-Reactivity	Human;Rat;Mouse;
Recommended dilutions	Western Blot: 1/500 - 1/2000. Immunohistochemistry: 1/100 - 1/300. ELISA: 1/20000. Not yet tested in other applications.
Immunogen	The antiserum was produced against synthesized peptide derived from human TUBGCP6. AA range:741-790
Specificity	GCP6 Polyclonal Antibody detects endogenous levels of GCP6 protein.
Formulation	Liquid in PBS containing 50% glycerol, 0.5% BSA and 0.02% sodium azide.
Storage	Store at -20°C. Avoid repeated freeze-thaw cycles.
Protein Name	Gamma-tubulin complex component 6
Gene Name	TUBGCP6
Cellular localization	Cytoplasm, cytoskeleton, microtubule organizing center, centrosome .
Purification	The antibody was affinity-purified from rabbit antiserum by affinity-chromatography using epitope-specific immunogen.
Clonality	Polyclonal
Concentration	1 mg/ml
Observed band	200kD
Human Gene ID	85378
Human Swiss-Prot Number	Q96RT7
Alternative Names	TUBGCP6; GCP6; KIAA1669; Gamma-tubulin complex component 6; GCP-6
Background	The protein encoded by this gene is part of a large multisubunit complex required for microtubule nucleation at the centrosome. [provided by RefSeq, Jul 2008],

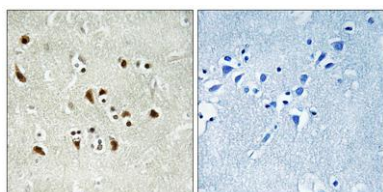




Western Blot analysis of various cells using GCP6  
Polyclonal Antibody diluted at 1:1000



Immunohistochemical analysis of paraffin-embedded Human brain. Antibody was diluted at 1:100(4° overnight). High-pressure and temperature Tris-EDTA, pH8.0 was used for antigen retrieval. Negative contrl (right) obtained from antibody was pre-absorbed by immunogen peptide.



Immunohistochemistry analysis of paraffin-embedded human brain tissue, using TUBGCP6 Antibody. The picture on the right is blocked with the synthesized peptide.





**ELK Biotechnology**

TUBGCP6 --



-- 170

-- 130

-- 95

-- 72

-- 55

(KD)

Western blot analysis of lysates from COLO cells, using TUBGCP6 Antibody. The lane on the right is blocked with the synthesized peptide.



+86-27-59760950

ELKbio@ELKbiotech.com

[www.elkbiotech.com](http://www.elkbiotech.com)

23-2, No.388 Gaoxin 2nd Road,Wuhan East Lake Hi-tech Development Zone, Hubei , P.R.C