

GBP3 rabbit pAb

Cat No.:ES2406

For research use only

Overview

Product Name	GBP3 rabbit pAb
Host species	Rabbit
Applications	WB;IHC;IF;ELISA
Species Cross-Reactivity	Human;Rat;Mouse;
Recommended dilutions	Western Blot: 1/500 - 1/2000. Immunohistochemistry: 1/100 - 1/300. ELISA: 1/10000. Not yet tested in other applications.
Immunogen	The antiserum was produced against synthesized peptide derived from human GBP3. AA range:481-530
Specificity	GBP3 Polyclonal Antibody detects endogenous levels of GBP3 protein.
Formulation	Liquid in PBS containing 50% glycerol, 0.5% BSA and 0.02% sodium azide.
Storage	Store at -20°C. Avoid repeated freeze-thaw cycles.
Protein Name	Guanylate-binding protein 3
Gene Name	GBP3
Cellular localization	Cytoplasm . Cytoplasm, perinuclear region . Golgi apparatus membrane . Heterodimers with GBP1, GBP2 and GBP5 localize in the compartment of the prenylated GBPs: with GBP1 in a vesicle-like compartment, with GBP2, around the nucleus and with GBP-5, at the Golgi apparatus. .
Purification	The antibody was affinity-purified from rabbit antiserum by affinity-chromatography using epitope-specific immunogen.
Clonality	Polyclonal
Concentration	1 mg/ml
Observed band	64kD
Human Gene ID	2635
Human Swiss-Prot Number	Q9H0R5
Alternative Names	GBP3; Guanylate-binding protein 3; GTP-binding protein 3; GBP-3; Guanine nucleotide-binding

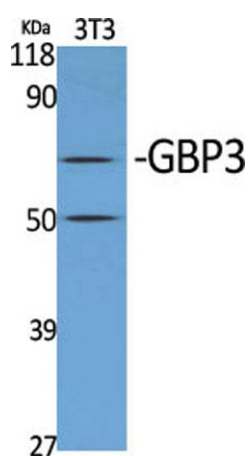




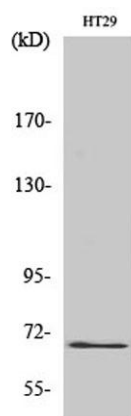
Background

protein 3

This gene encodes a member of the guanylate-binding protein (GBP) family. GBPs specifically bind guanine nucleotides (GMP, GDP, and GTP) and contain two of the three consensus motifs found in typical GTP-binding proteins. The encoded protein interacts with a member of the germinal center kinase family. Multiple transcript variants encoding different isoforms have been found for this gene. [provided by RefSeq, Jan 2016],

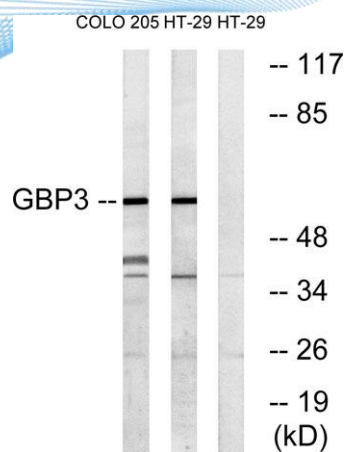


Western Blot analysis of various cells using GBP3 Polyclonal Antibody

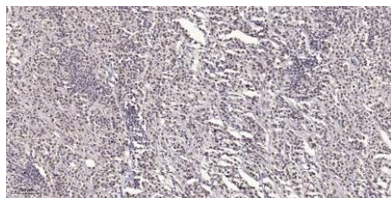


Western Blot analysis of COLO205 cells using GBP3 Polyclonal Antibody





Western blot analysis of lysates from HT-29 and COLO cells, using GBP3 Antibody. The lane on the right is blocked with the synthesized peptide.



Immunohistochemical analysis of paraffin-embedded human small intestinal carcinoma tissue. 1,primary Antibody was diluted at 1:200(4° overnight). 2, Sodium citrate pH 6.0 was used for antigen retrieval(>98°C,20min). 3,Secondary antibody was diluted at 1:200

