



# Frizzled-3 rabbit pAb

Cat No.:ES2372

For research use only

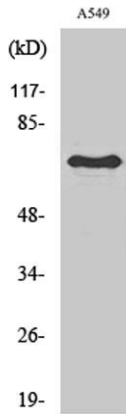
## Overview

<b>Product Name</b>	Frizzled-3 rabbit pAb
<b>Host species</b>	Rabbit
<b>Applications</b>	WB;IF;ELISA
<b>Species Cross-Reactivity</b>	Human;Mouse
<b>Recommended dilutions</b>	Western Blot: 1/500 - 1/2000. Immunofluorescence: 1/200 - 1/1000. ELISA: 1/10000. Not yet tested in other applications.
<b>Immunogen</b>	The antiserum was produced against synthesized peptide derived from human FZD3. AA range:141-190
<b>Specificity</b>	Frizzled-3 Polyclonal Antibody detects endogenous levels of Frizzled-3 protein.
<b>Formulation</b>	Liquid in PBS containing 50% glycerol, 0.5% BSA and 0.02% sodium azide.
<b>Storage</b>	Store at -20°C. Avoid repeated freeze-thaw cycles.
<b>Protein Name</b>	Frizzled-3
<b>Gene Name</b>	FZD3
<b>Cellular localization</b>	Membrane; Multi-pass membrane protein. Cell membrane ; Multi-pass membrane protein . Cell surface . Apical cell membrane ; Multi-pass membrane protein. Colocalizes with FZD6 at the apical face of the cell (By similarity). .
<b>Purification</b>	The antibody was affinity-purified from rabbit antiserum by affinity-chromatography using epitope-specific immunogen.
<b>Clonality</b>	Polyclonal
<b>Concentration</b>	1 mg/ml
<b>Observed band</b>	76kD
<b>Human Gene ID</b>	7976
<b>Human Swiss-Prot Number</b>	Q9NPG1
<b>Alternative Names</b>	FZD3; Frizzled-3; Fz-3; hFz3
<b>Background</b>	frizzled class receptor 3(FZD3) Homo sapiens This gene is a member of the frizzled gene family.

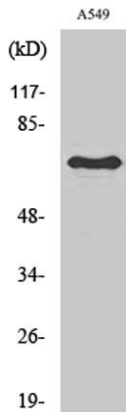




Members of this family encode seven-transmembrane domain proteins that are receptors for the wingless type MMTV integration site family of signaling proteins. Most frizzled receptors are coupled to the beta-catenin canonical signaling pathway. The function of this protein is unknown, although it may play a role in mammalian hair follicle development. Alternative splicing results in multiple transcript variants. This gene is a susceptibility locus for schizophrenia. [provided by RefSeq, Dec 2010],



Western Blot analysis of various cells using Frizzled-3 Polyclonal Antibody

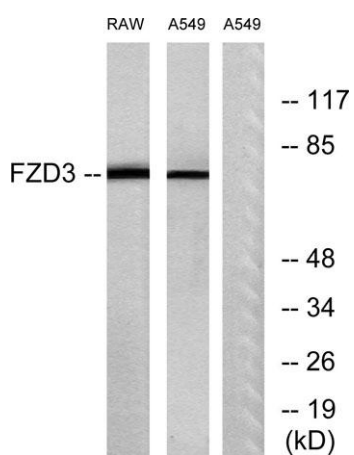
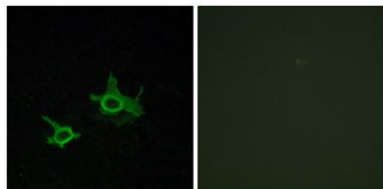


Western Blot analysis of RAW264.7 cells using Frizzled-3 Polyclonal Antibody





Immunofluorescence analysis of COS7 cells, using FZD3 Antibody. The picture on the right is blocked with the synthesized peptide.



Western blot analysis of lysates from A549 and RAW264.7 cells, using FZD3 Antibody. The lane on the right is blocked with the synthesized peptide.

