

# FoxB2 rabbit pAb

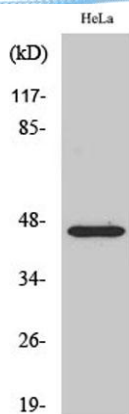
Cat No.:ES2361

For research use only

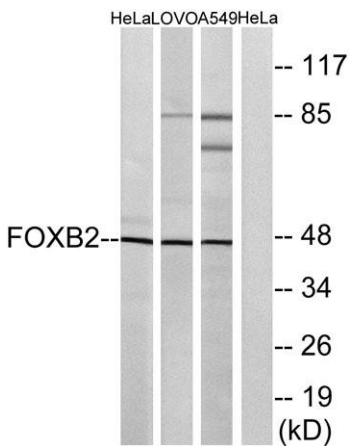
## Overview

Product Name	FoxB2 rabbit pAb
Host species	Rabbit
Applications	WB;ELISA
Species Cross-Reactivity	Human;Mouse
Recommended dilutions	Western Blot: 1/500 - 1/2000. ELISA: 1/40000. Not yet tested in other applications.
Immunogen	The antiserum was produced against synthesized peptide derived from human FOXB2. AA range:251-300
Specificity	FoxB2 Polyclonal Antibody detects endogenous levels of FoxB2 protein.
Formulation	Liquid in PBS containing 50% glycerol, 0.5% BSA and 0.02% sodium azide.
Storage	Store at -20°C. Avoid repeated freeze-thaw cycles.
Protein Name	Forkhead box protein B2
Gene Name	FOXB2
Cellular localization	Nucleus .
Purification	The antibody was affinity-purified from rabbit antiserum by affinity-chromatography using epitope-specific immunogen.
Clonality	Polyclonal
Concentration	1 mg/ml
Observed band	46kD
Human Gene ID	442425
Human Swiss-Prot Number	Q5VYV0
Alternative Names	FOXB2; Forkhead box protein B2
Background	function:Transcription factor.,similarity:Contains 1 fork-head DNA-binding domain.,





Western Blot analysis of various cells using FoxB2  
Polyclonal Antibody cells nucleus extracted by Minute TM  
Cytoplasmic and Nuclear Fractionation kit  
(SC-003, Inventbiotech, MN, USA).



Western blot analysis of lysates from HeLa, LOVO, and  
A549 cells, using FOXB2 Antibody. The lane on the right is  
blocked with the synthesized peptide.

