



FIR rabbit pAb

Cat No.:ES2346

For research use only

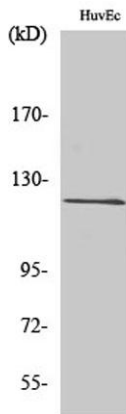
Overview

Product Name	FIR rabbit pAb
Host species	Rabbit
Applications	WB;IF;ELISA
Species Cross-Reactivity	Human;Mouse
Recommended dilutions	Western Blot: 1/500 - 1/2000. Immunofluorescence: 1/200 - 1/1000. ELISA: 1/20000. Not yet tested in other applications.
Immunogen	The antiserum was produced against synthesized peptide derived from human FIR. AA range:331-380
Specificity	FIR Polyclonal Antibody detects endogenous levels of FIR protein.
Formulation	Liquid in PBS containing 50% glycerol, 0.5% BSA and 0.02% sodium azide.
Storage	Store at -20°C. Avoid repeated freeze-thaw cycles.
Protein Name	FERM RhoGEF and pleckstrin domain-containing protein 2
Gene Name	FARP2
Cellular localization	cytoplasm,cytosol,cytoskeleton,extrinsic component of membrane,
Purification	The antibody was affinity-purified from rabbit antiserum by affinity-chromatography using epitope-specific immunogen.
Clonality	Polyclonal
Concentration	1 mg/ml
Observed band	119kD
Human Gene ID	9855
Human Swiss-Prot Number	O94887
Alternative Names	FARP2; KIAA0793; PLEKHC3; FERM; RhoGEF and pleckstrin domain-containing protein 2; FERM domain including RhoGEF; FIR; Pleckstrin homology domain-containing family C member 3; PH domain-containing family C member 3 function:Rho-guanine nucleotide exchange factor
Background	

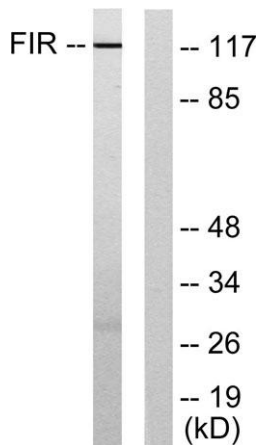




that activates RAC1. Plays a role in the response to class 3 semaphorins and remodeling of the actin cytoskeleton.,similarity:Contains 1 DH (DBL-homology) domain.,similarity:Contains 1 FERM domain.,similarity:Contains 2 PH domains.,subunit:Interacts with PLXNA1. Interaction with PLXNA1 or PIP5K1C lowers its guanine nucleotide exchange activity. Dissociates from PLXNA1 when SEMA3A binds to the receptor. Interacts with PIP5K1C via its FERM domain. The interaction with PIP5K1C is enhanced by SEMA3A binding.,



Western Blot analysis of various cells using FIR Polyclonal Antibody



Western blot analysis of lysates from HUVEC cells, using FIR Antibody. The lane on the right is blocked with the synthesized peptide.

