



Exo1 rabbit pAb

Cat No.:ES2309

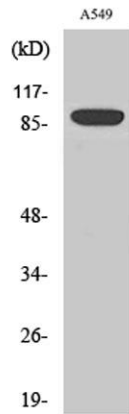
For research use only

Overview

Product Name	Exo1 rabbit pAb
Host species	Rabbit
Applications	WB;IF;ELISA
Species Cross-Reactivity	Human;Mouse
Recommended dilutions	Western Blot: 1/500 - 1/2000. Immunofluorescence: 1/200 - 1/1000. ELISA: 1/10000. Not yet tested in other applications.
Immunogen	The antiserum was produced against synthesized peptide derived from human EXO1. AA range:61-110
Specificity	Exo1 Polyclonal Antibody detects endogenous levels of Exo1 protein.
Formulation	Liquid in PBS containing 50% glycerol, 0.5% BSA and 0.02% sodium azide.
Storage	Store at -20°C. Avoid repeated freeze-thaw cycles.
Protein Name	Exonuclease 1
Gene Name	EXO1
Cellular localization	Nucleus . Colocalizes with PCNA to discrete nuclear foci in S-phase.
Purification	The antibody was affinity-purified from rabbit antiserum by affinity-chromatography using epitope-specific immunogen.
Clonality	Polyclonal
Concentration	1 mg/ml
Observed band	94kD
Human Gene ID	9156
Human Swiss-Prot Number	Q9UQ84
Alternative Names	EXO1; EXOI; HEX1; Exonuclease 1; hExo1; Exonuclease I; hExoI
Background	This gene encodes a protein with 5' to 3' exonuclease activity as well as an RNase H activity. It is similar to the Saccharomyces cerevisiae protein Exo1 which interacts with Msh2 and which is involved in mismatch repair and recombination.

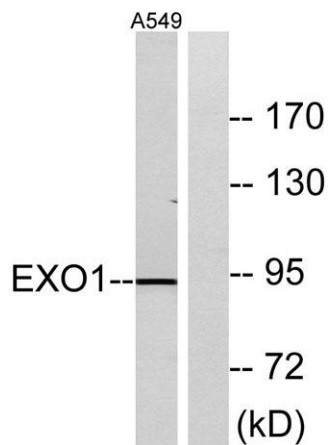
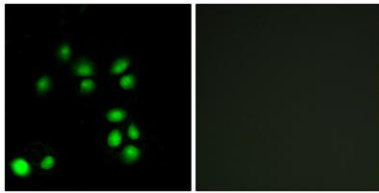


Alternative splicing of this gene results in three transcript variants encoding two different isoforms. [provided by RefSeq, Jul 2008],



Western Blot analysis of various cells using Exo1 Polyclonal Antibody cells nucleus extracted by Minute TM Cytoplasmic and Nuclear Fractionation kit (SC-003, Inventbiotech, MN, USA).

Immunofluorescence analysis of A549 cells, using EXO1 Antibody. The picture on the right is blocked with the synthesized peptide.



Western blot analysis of lysates from A549 cells, using EXO1 Antibody. The lane on the right is blocked with the synthesized peptide.

