

EMR4 rabbit pAb

Cat No.:ES2259

For research use only

Overview

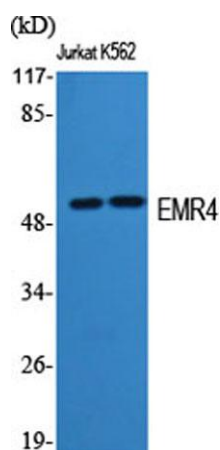
Product Name	EMR4 rabbit pAb
Host species	Rabbit
Applications	WB;IF;ELISA
Species Cross-Reactivity	Human;Monkey
Recommended dilutions	Western Blot: 1/500 - 1/2000. Immunofluorescence: 1/200 - 1/1000. ELISA: 1/20000. Not yet tested in other applications.
Immunogen	The antiserum was produced against synthesized peptide derived from human EMR4P. AA range:101-150
Specificity	EMR4 Polyclonal Antibody detects endogenous levels of EMR4 protein.
Formulation	Liquid in PBS containing 50% glycerol, 0.5% BSA and 0.02% sodium azide.
Storage	Store at -20°C. Avoid repeated freeze-thaw cycles.
Protein Name	Putative EGF-like module-containing mucin-like hormone receptor-like 4
Gene Name	EMR4P
Cellular localization	[Isoform 1]: Cell membrane ; Multi-pass membrane protein .; [Isoform 2]: Secreted .
Purification	The antibody was affinity-purified from rabbit antiserum by affinity-chromatography using epitope-specific immunogen.
Clonality	Polyclonal
Concentration	1 mg/ml
Observed band	55kD
Human Gene ID	326342
Human Swiss-Prot Number	Q86SQ3
Alternative Names	EMR4P; EMR4; GPR127; PGR16; Putative EGF-like module-containing mucin-like hormone receptor-like 4; EGF-like module receptor 4; G-protein coupled receptor 127; G-protein coupled receptor PGR16



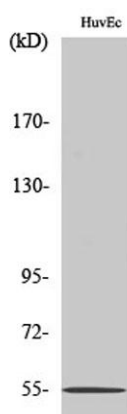


Background

This gene is a member of the EGF-TM7 receptor gene family which is thought to play a role in leukocyte adhesion and migration. In other vertebrates, including nonhuman primates, this gene encodes a protein containing N-terminal EGF domains and a C-terminal transmembrane domain. Sequence evidence for the human gene, however, indicates nucleotide deletion in the genomic sequence would result in frameshift and early termination of translation. A protein expressed by this gene would be soluble rather than expressed on the cell surface. As the encoded protein has not been detected, this gene may represent a transcribed pseudogene. [provided by RefSeq, Aug 2008],

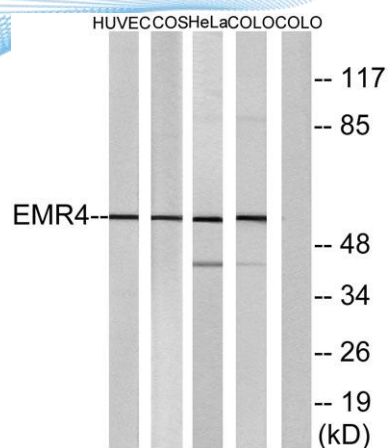


Western Blot analysis of various cells using EMR4 Polyclonal Antibody



Western Blot analysis of COLO205 cells using EMR4 Polyclonal Antibody





Western blot analysis of lysates from HUVEC cells, COS7 cells, HeLa cells, and COLO205 cells, using EMR4 Antibody. The lane on the right is blocked with the synthesized peptide.

