

# DQX1 rabbit pAb

Cat No.:ES2197

For research use only

## Overview

Product Name	DQX1 rabbit pAb
Host species	Rabbit
Applications	WB;ELISA
Species Cross-Reactivity	Human;Mouse;Monkey
Recommended dilutions	Western Blot: 1/500 - 1/2000. ELISA: 1/20000. Not yet tested in other applications.
Immunogen	The antiserum was produced against synthesized peptide derived from human DQX1. AA range:551-600
Specificity	DQX1 Polyclonal Antibody detects endogenous levels of DQX1 protein.
Formulation	Liquid in PBS containing 50% glycerol, 0.5% BSA and 0.02% sodium azide.
Storage	Store at -20°C. Avoid repeated freeze-thaw cycles.
Protein Name	ATP-dependent RNA helicase DQX1
Gene Name	DQX1
Cellular localization	Nucleus .
Purification	The antibody was affinity-purified from rabbit antiserum by affinity-chromatography using epitope-specific immunogen.
Clonality	Polyclonal
Concentration	1 mg/ml
Observed band	79kD
Human Gene ID	165545
Human Swiss-Prot Number	Q8TE96
Alternative Names	DQX1; ATP-dependent RNA helicase DQX1; DEAQ box polypeptide 1
Background	similarity:Contains 1 helicase ATP-binding domain.,similarity:Contains 1 helicase C-terminal domain.,

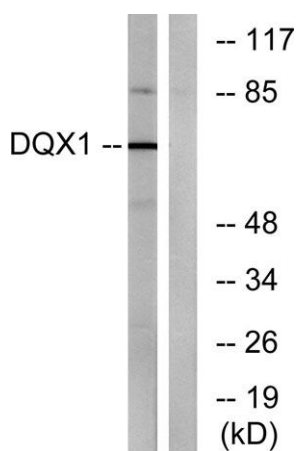




**ELK Biotechnology**



Western Blot analysis of various cells using DQX1  
Polyclonal Antibody cells nucleus extracted by Minute TM  
Cytoplasmic and Nuclear Fractionation kit  
(SC-003, Inventbiotech, MN, USA).



Western blot analysis of lysates from COS7 cells, using  
DQX1 Antibody. The lane on the right is blocked with the  
synthesized peptide.



+86-27-59760950

[ELKbio@ELKbiotech.com](mailto:ELKbio@ELKbiotech.com)

[www.elkbiotech.com](http://www.elkbiotech.com)

23-2, No.388 Gaoxin 2nd Road, Wuhan East Lake Hi-tech Development Zone, Hubei, P.R.C.