

# DcR3 rabbit pAb

Cat No.:ES2152

For research use only

## Overview

Product Name	DcR3 rabbit pAb
Host species	Rabbit
Applications	WB;IHC;IF;ELISA
Species Cross-Reactivity	Human;Rat;Mouse;
Recommended dilutions	Western Blot: 1/500 - 1/2000. Immunohistochemistry: 1/100 - 1/300. Immunofluorescence: 1/200 - 1/1000. ELISA: 1/5000. Not yet tested in other applications.
Immunogen	The antiserum was produced against synthesized peptide derived from human TNFRSF6B. AA range:251-300
Specificity	DcR3 Polyclonal Antibody detects endogenous levels of DcR3 protein.
Formulation	Liquid in PBS containing 50% glycerol, 0.5% BSA and 0.02% sodium azide.
Storage	Store at -20°C. Avoid repeated freeze-thaw cycles.
Protein Name	Tumor necrosis factor receptor superfamily member 6B
Gene Name	TNFRSF6B
Cellular localization	Secreted.
Purification	The antibody was affinity-purified from rabbit antiserum by affinity-chromatography using epitope-specific immunogen.
Clonality	Polyclonal
Concentration	1 mg/ml
Observed band	32kD
Human Gene ID	8771
Human Swiss-Prot Number	O95407
Alternative Names	TNFRSF6B; DCR3; TR6; Tumor necrosis factor receptor superfamily member 6B; Decoy receptor 3; DcR3; Decoy receptor for Fas ligand; M68
Background	This gene belongs to the tumor necrosis factor receptor superfamily. The encoded protein is

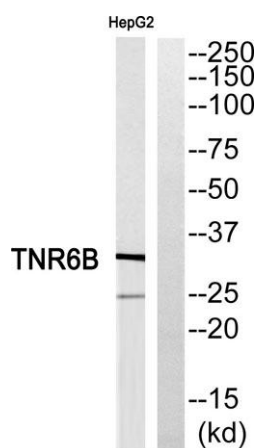




postulated to play a regulatory role in suppressing FasL- and LIGHT-mediated cell death. It acts as a decoy receptor that competes with death receptors for ligand binding. Over-expression of this gene has been noted in gastrointestinal tract tumors. Read-through transcription into this gene from the neighboring upstream gene, which encodes regulator of telomere elongation helicase 1 (RTEL1), generates a non-coding transcript. [provided by RefSeq, Feb 2011],



Western Blot analysis of various cells using DcR3  
Polyclonal Antibody cells nucleus extracted by Minute TM  
Cytoplasmic and Nuclear Fractionation kit  
(SC-003, Invent biotech, MN, USA).



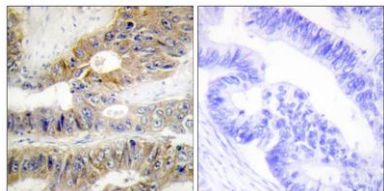
Western blot analysis of TNFRSF6B Antibody. The lane on the right is blocked with the TNFRSF6B peptide.



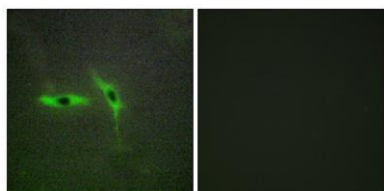


**ELK Biotechnology**

Immunohistochemistry analysis of paraffin-embedded human colon t carcinoma, using TNFRSF6B Antibody. The lane on the right is blocked with the TNFRSF6B peptide.



Immunofluorescence analysis of TNFRSF6B Antibody. The lane on the right is blocked with the TNFRSF6B peptide.



+86-27-59760950

[ELKbio@ELKbiotech.com](mailto:ELKbio@ELKbiotech.com)

[www.elkbiotech.com](http://www.elkbiotech.com)

23-2, No.388 Gaoxin 2nd Road,Wuhan East Lake Hi-tech Development Zone, Hubei , P.R.C