

# SGT1/ECD Rabbit pAb

Cat No.:ES20869

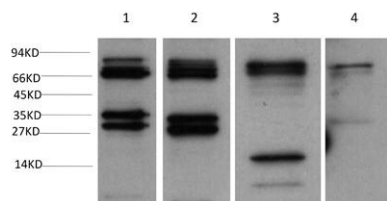
For research use only

## Overview

Product Name	SGT1/ECD Rabbit pAb
Host species	Rabbit
Applications	IHC;WB
Species Cross-Reactivity	Human; Mouse;Rat
Recommended dilutions	IHC-p1:50-200 ,WB 1:1000-2000
Immunogen	Synthesized peptide derived from human SGT1/ECD AA range: 236-286
Specificity	This antibody detects endogenous levels of SGT1/ECD at Human, Mouse,Rat
Formulation	Liquid in PBS containing 50% glycerol, 0.5% BSA and 0.02% sodium azide.
Storage	Store at -20°C. Avoid repeated freeze-thaw cycles.
Protein Name	SGT1/ECD
Gene Name	ECD SGT1
Cellular localization	Cytoplasm . Nucleus . Predominantly is located in the cytoplasm. .
Purification	The antibody was affinity-purified from rabbit antiserum by affinity-chromatography using epitope-specific immunogen.
Clonality	Polyclonal
Concentration	1 mg/ml
Observed band	73kD
Human Gene ID	11319
Human Swiss-Prot Number	O95905
Alternative Names	Protein SGT1 (hSGT1) (Protein ecdysoneless homolog) (Suppressor of GCR2)
Background	



Western blot analysis of 1)Hela Cell, 2) 293T Cell, 3)Mouse Brain Tissue, 4) Rat Brain Tissue Lysate using SGT1/ECDRabbit polyclonal Antibody diluted at 1:2,000.



Immunohistochemical analysis of paraffin-embedded human Breast cancer. 1, Antibody was diluted at 1:200(4° overnight). 2, Tris-EDTA,pH9.0 was used for antigen retrieval. 3,Secondary antibody was diluted at 1:200(room temperature, 45min).

