

# Eif4b Rabbit pAb

Cat No.:ES20867

For research use only

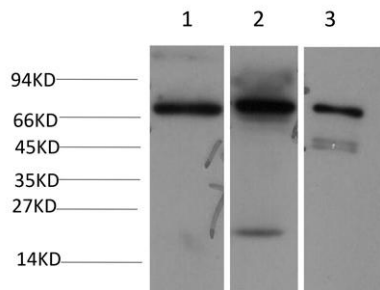
## Overview

Product Name	Eif4b Rabbit pAb
Host species	Rabbit
Applications	IHC;WB
Species Cross-Reactivity	Human; Mouse;Rat
Recommended dilutions	IHC-p1:50-200 ,WB 1:1000-2000
Immunogen	Synthesized peptide derived from human Eif4b AA range: 209-259
Specificity	This antibody detects endogenous levels of Eif4b at Human, Mouse,Rat
Formulation	Liquid in PBS containing 50% glycerol, 0.5% BSA and 0.02% sodium azide.
Storage	Store at -20°C. Avoid repeated freeze-thaw cycles.
Protein Name	Eif4b
Gene Name	EIF4B
Cellular localization	cytosol,polysome,eukaryotic translation initiation factor 4F complex,dendrite,neuronal cell body,
Purification	The antibody was affinity-purified from rabbit antiserum by affinity-chromatography using epitope-specific immunogen.
Clonality	Polyclonal
Concentration	1 mg/ml
Observed band	69kD
Human Gene ID	1975
Human Swiss-Prot Number	P23588
Alternative Names	Eukaryotic translation initiation factor 4B (eIF-4B)
Background	cRequired for the binding of mRNA to ribosomes. Functions in close association with EIF4-F and EIF4-A. Binds near the 5'-terminal cap of mRNA in presence of EIF-4F and ATP. Promotes the ATPase activity and the ATP-dependent RNA unwinding activity of both EIF4-A and EIF4-F.,similarity:Contains 1 RRM (RNA recognition motif) domain.,subunit:Self-associates and interacts with



### EIF3 p170 subunit.

Western blot analysis of 1)Hela Cell, 2) 3T3 Cell, 3)PC12 Cell Lysate using Eif4bRabbit Polyclonal Antibody diluted at 1:2,000.



Immunohistochemical analysis of paraffin-embedded human Colon cancer. 1, Antibody was diluted at 1:200(4° overnight). 2, Tris-EDTA,pH9.0 was used for antigen retrieval. 3,Secondary antibody was diluted at 1:200(room temperature, 45min).

