

SARS-COV-2 Spike Protein S1 Rabbit pAb

Cat No.:ES20860

For research use only

Overview

Product Name	SARS-COV-2 Spike Protein S1 Rabbit pAb
Host species	Rabbit
Applications	WB
Species Cross-Reactivity	Human virus
Recommended dilutions	WB 1:1000-2000
Immunogen	Synthesized peptide derived from SARS-COV-2 Spike Protein S1
Specificity	This antibody detects endogenous levels of SARS-COV-2 Spike Protein S1
Formulation	Liquid in PBS containing 50% glycerol, 0.5% BSA and 0.02% sodium azide.
Storage	Store at -20°C. Avoid repeated freeze-thaw cycles.
Protein Name	SARS-COV-2 Spike Protein S1
Gene Name	SARS-COV-2 Spike Protein S1
Cellular localization	
Purification	The antibody was affinity-purified from rabbit antiserum by affinity-chromatography using epitope-specific immunogen.
Clonality	Polyclonal
Concentration	1 mg/ml
Observed band	
Human Gene ID	
Human Swiss-Prot Number	P0DTC2
Alternative Names	YM33057
Background	The spike (S) glycoprotein of coronaviruses is known to be essential in the binding of the virus to the host cell at the advent of the infection process. Most notable is severe acute respiratory syndrome (SARS). The severe acute respiratory syndrome-coronavirus (SARS-CoV) spike (S) glycoprotein alone can mediate the membrane fusion required for virus entry and cell fusion. It is also a major immunogen and a target for entry inhibitors. It's been reported that

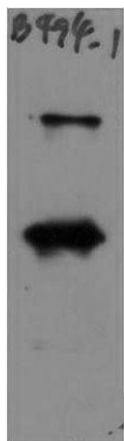




ELK Biotechnology

2019-nCoV can infect the human respiratory epithelial cells through interaction with the human ACE2 receptor.

Western blot analysis of recombinant SARS-CoV-2 Spike Protein using Rabbit pAb diluted at 1:10,000.



+86-27-59760950

ELKbio@ELKbiotech.com

www.elkbiotech.com

23-2, No.388 Gaoxin 2nd Road, Wuhan East Lake Hi-tech Development Zone, Hubei, P.R.C.