

ACE2 Rabbit pAb

Cat No.:ES20857

For research use only

Overview

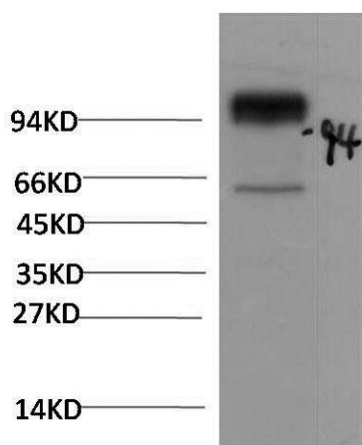
Product Name	ACE2 Rabbit pAb
Host species	Rabbit
Applications	IHC;WB
Species Cross-Reactivity	Human; Mouse;Rat
Recommended dilutions	IHC-p1:50-200 ,WB 1:1000-2000
Immunogen	Synthesized peptide derived from human ACE2 AA range: 425-475
Specificity	This antibody detects endogenous levels of ACE2 at Human, Mouse,Rat
Formulation	Liquid in PBS containing 50% glycerol, 0.5% BSA and 0.02% sodium azide.
Storage	Store at -20°C. Avoid repeated freeze-thaw cycles.
Protein Name	ACE2
Gene Name	ACE2 UNQ868/PRO1885
Cellular localization	[Processed angiotensin-converting enzyme 2]: Secreted .; Cell membrane ; Single-pass type I membrane protein . Cytoplasm . Cell projection, cilium . Apical cell membrane . Detected in both cell membrane and cytoplasm in neurons. .; [Isoform 2]: Apical cel
Purification	The antibody was affinity-purified from rabbit antiserum by affinity-chromatography using epitope-specific immunogen.
Clonality	Polyclonal
Concentration	1 mg/ml
Observed band	120-135kD
Human Gene ID	59272
Human Swiss-Prot Number	Q9BYF1
Alternative Names	Angiotensin-converting enzyme 2 (EC 3.4.17.23) (ACE-related carboxypeptidase) (Angiotensin-converting enzyme homolog) (ACEH) (Metalloprotease MPROT15) [Cleaved into: Processed angiotensin-converting enzyme 2]



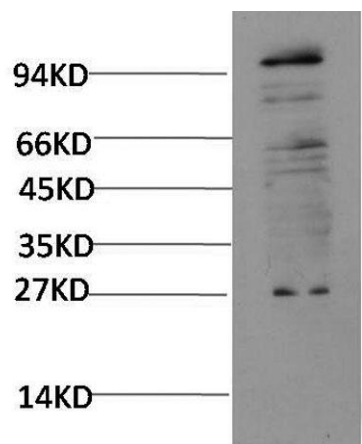


Background

angiotensin I converting enzyme 2(ACE2) Homo sapiens The protein encoded by this gene belongs to the angiotensin-converting enzyme family of dipeptidyl carboxydipeptidases and has considerable homology to human angiotensin 1 converting enzyme. This secreted protein catalyzes the cleavage of angiotensin I into angiotensin 1-9, and angiotensin II into the vasodilator angiotensin 1-7. The organ- and cell-specific expression of this gene suggests that it may play a role in the regulation of cardiovascular and renal function, as well as fertility. In addition, the encoded protein is a functional receptor for the spike glycoprotein of the human coronaviruses SARS and HCoV-NL63.



Western blot analysis of 293T transfected ACE2 cell Lysate using Rabbit pAb diluted at 1:5,000.

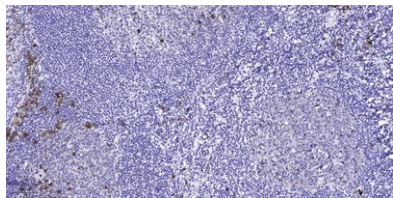


Western blot analysis of HepG2 cell Lysate using Rabbit pAb diluted at 1:2,000





ELK Biotechnology



Immunohistochemical analysis of paraffin-embedded human tonsil. 1, Antibody was diluted at 1:200(4° overnight). 2, Tris-EDTA,pH9.0 was used for antigen retrieval. 3,Secondary antibody was diluted at 1:200(room temperature, 45min).



+86-27-59760950

ELKbio@ELKbiotech.com

www.elkbiotech.com

23-2, No.388 Gaoxin 2nd Road,Wuhan East Lake Hi-tech Development Zone, Hubei , P.R.C