

Bestrophin-1 rabbit pAb

Cat No.:ES20817

For research use only

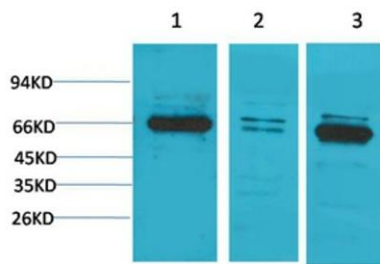
Overview

| | |
|--------------------------|---|
| Product Name | Bestrophin-1 rabbit pAb |
| Host species | Rabbit |
| Applications | WB;IHC;IF |
| Species Cross-Reactivity | Human;Rat;Mouse |
| Recommended dilutions | Western Blot: 1/500 - 1/2000. Immunohistochemistry: 1/100 - 1/300. ELISA: 1/40000. Not yet tested in other applications. |
| Immunogen | Synthetic Peptide of Bestrophin-1 AA range: 161-211 |
| Specificity | The antibody detects endogenous Bestrophin-1 protein |
| Formulation | Liquid in PBS containing 50% glycerol, 0.5% BSA and 0.02% sodium azide. |
| Storage | Store at -20°C. Avoid repeated freeze-thaw cycles. |
| Protein Name | Bestrophin-1 (TU15B) (Vitelliform macular dystrophy protein 2) |
| Gene Name | BEST1 |
| Cellular localization | Cell membrane ; Multi-pass membrane protein . Basolateral cell membrane . |
| Purification | The antibody was affinity-purified from rabbit antiserum by affinity-chromatography using epitope-specific immunogen. |
| Clonality | Polyclonal |
| Concentration | 1 mg/ml |
| Observed band | 67kD |
| Human Gene ID | 7439 |
| Human Swiss-Prot Number | O76090 |
| Alternative Names | Bestrophin-1 (TU15B;Vitelliform macular dystrophy protein 2) |
| Background | This gene encodes a member of the bestrophin gene family. This small gene family is characterized by proteins with a highly conserved N-terminus with four to six transmembrane domains. Bestrophins may form chloride ion channels or may regulate |



voltage-gated L-type calcium-ion channels. Bestrophins are generally believed to form calcium-activated chloride-ion channels in epithelial cells but they have also been shown to be highly permeable to bicarbonate ion transport in retinal tissue. Mutations in this gene are responsible for juvenile-onset vitelliform macular dystrophy (VMD2), also known as Best macular dystrophy, in addition to adult-onset vitelliform macular dystrophy (AVMD) and other retinopathies. Alternative splicing results in multiple variants encoding distinct isoforms.[provided by RefSeq, Nov 2008],

Western blot analysis of 1) PC3, 2) Mouse Brain Tissue, 3) Rat Brain Tissue with Bestrophin-1 Rabbit pAb diluted at 1:2,000.



Immunohistochemical analysis of paraffin-embedded Rat Brain Tissue using Bestrophin-1 Rabbit pAb diluted at 1:200.

