

# CK18 rabbit pAb

Cat No.:ES20786

For research use only

## Overview

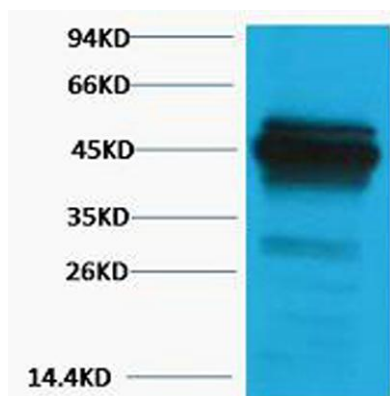
Product Name	CK18 rabbit pAb
Host species	Rabbit
Applications	WB
Species Cross-Reactivity	Human
Recommended dilutions	WB: 1:1000-2000
Immunogen	Recombinant Protein of Keratin type I cytoskeletal 18
Specificity	The antibody detects endogenous Cytokeratin 18 protein.
Formulation	Liquid in PBS containing 50% glycerol, 0.5% BSA and 0.02% sodium azide.
Storage	Store at -20°C. Avoid repeated freeze-thaw cycles.
Protein Name	Keratin type I cytoskeletal 18
Gene Name	KRT18
Cellular localization	Cytoplasm, perinuclear region. Nucleus, nucleolus.
Purification	The antibody was affinity-purified from rabbit antiserum by affinity-chromatography using epitope-specific immunogen.
Clonality	Polyclonal
Concentration	
Observed band	46kD
Human Gene ID	3875
Human Swiss-Prot Number	P05783
Alternative Names	KRT18; CYK18; PIG46; Keratin, type I cytoskeletal 18; Cell proliferation-inducing gene 46 protein; Cytokeratin-18; CK-18; Keratin-18; K18
Background	KRT18 encodes the type I intermediate filament chain keratin 18. Keratin 18, together with its filament partner keratin 8, are perhaps the most commonly found members of the intermediate filament gene family. They are expressed in single layer epithelial tissues of the body. Mutations in this gene have been linked to cryptogenic cirrhosis. Two





**ELK Biotechnology**

transcript variants encoding the same protein have been found for this gene. [provided by RefSeq, Jul 2008],



Western blot analysis of Hela, Rabbit pAb diluted at 1:2000. Secondary antibody(catalog#:RS0002) was diluted at 1:20000



+86-27-59760950

ELKbio@ELKbiotech.com

[www.elkbiotech.com](http://www.elkbiotech.com)

23-2, No.388 Gaoxin 2nd Road,Wuhan East Lake Hi-tech Development Zone, Hubei , P.R.C