

# Crystallin- $\alpha$ C rabbit pAb

Cat No.:ES20776

For research use only

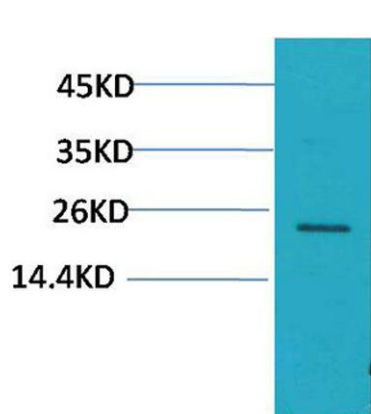
## Overview

Product Name	Crystallin- $\alpha$ C rabbit pAb
Host species	Rabbit
Applications	WB
Species Cross-Reactivity	Human
Recommended dilutions	WB: 1:500-1000
Immunogen	Recombinant Protein of Crystallin- $\alpha$ C
Specificity	The antibody detects endogenous Crystallin- $\alpha$ C protein.
Formulation	Liquid in PBS containing 50% glycerol, 0.5% BSA and 0.02% sodium azide.
Storage	Store at -20°C. Avoid repeated freeze-thaw cycles.
Protein Name	Heat shock protein beta-8
Gene Name	HSPB8
Cellular localization	Cytoplasm . Nucleus . Translocates to nuclear foci during heat shock.
Purification	The antibody was affinity-purified from rabbit antiserum by affinity-chromatography using epitope-specific immunogen.
Clonality	Polyclonal
Concentration	
Observed band	22kD
Human Gene ID	26353
Human Swiss-Prot Number	Q9UJY1
Alternative Names	HSPB8; CRYAC; E2IG1; HSP22; PP1629; Heat shock protein beta-8; HspB8; Alpha-crystallin C chain; E2-induced gene 1 protein; Protein kinase H11; Small stress protein-like protein HSP22
Background	The protein encoded by this gene belongs to the superfamily of small heat-shock proteins containing a conservative alpha-crystallin domain at the C-terminal part of the molecule. The expression of this gene is induced by estrogen in estrogen receptor-positive breast cancer cells, and this





protein also functions as a chaperone in association with Bag3, a stimulator of macroautophagy. Thus, this gene appears to be involved in regulation of cell proliferation, apoptosis, and carcinogenesis, and mutations in this gene have been associated with different neuromuscular diseases, including Charcot-Marie-Tooth disease. [provided by RefSeq, Jul 2008],



Western blot analysis of Hela using Crystallin-αC Polyclonal Antibody. Secondary antibody(catalog#:RS0002) was diluted at 1:20000

