



# Endothelin B Receptor rabbit pAb

Cat No.:ES20766

For research use only

## Overview

<b>Product Name</b>	Endothelin B Receptor rabbit pAb
<b>Host species</b>	Rabbit
<b>Applications</b>	IHC;IF
<b>Species Cross-Reactivity</b>	Human;Rat;Mouse
<b>Recommended dilutions</b>	IHC 1:100-200
<b>Immunogen</b>	Synthetic Peptide of Endothelin B Receptor AA range: 270-350
<b>Specificity</b>	Endothelin B Receptor protein(A221) detects endogenous levels of Endothelin B Receptor
<b>Formulation</b>	Liquid in PBS containing 50% glycerol, 0.5% BSA and 0.02% sodium azide.
<b>Storage</b>	Store at -20°C. Avoid repeated freeze-thaw cycles.
<b>Protein Name</b>	Endothelin B receptor (ET-B) (ET-BR) (Endothelin receptor non-selective type)
<b>Gene Name</b>	EDNRB
<b>Cellular localization</b>	Cell membrane ; Multi-pass membrane protein. internalized after activation by endothelins. .
<b>Purification</b>	The antibody was affinity-purified from rabbit antiserum by affinity-chromatography using epitope-specific immunogen.
<b>Clonality</b>	Polyclonal
<b>Concentration</b>	1 mg/ml
<b>Observed band</b>	50kD
<b>Human Gene ID</b>	1910
<b>Human Swiss-Prot Number</b>	P24530
<b>Alternative Names</b>	Endothelin B receptor (ET-B;ET-BR;Endothelin receptor non-selective type)
<b>Background</b>	The protein encoded by this gene is a G protein-coupled receptor which activates a phosphatidylinositol-calcium second messenger system. Its ligand, endothelin, consists of a family of three potent vasoactive peptides: ET1, ET2, and ET3. Studies suggest that the multigenic disorder,

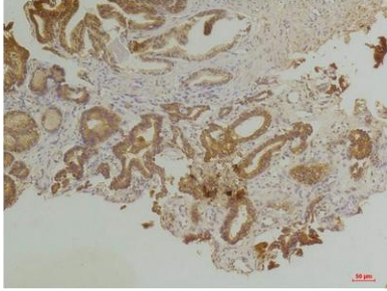




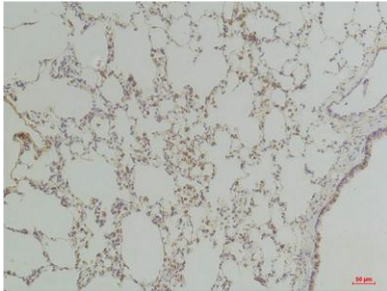
**ELK Biotechnology**

Hirschsprung disease type 2, is due to mutations in the endothelin receptor type B gene. Alternative splicing and the use of alternative promoters results in multiple transcript variants. [provided by RefSeq, Oct 2016],

Immunohistochemical analysis of paraffin-embedded Human Prostate Tissue using Endothelin B Receptor Rabbit pAb diluted at 1:200.



Immunohistochemical analysis of paraffin-embedded Rat Lung Tissue using Endothelin B Receptor Rabbit pAb diluted at 1:200.



+86-27-59760950

[ELKbio@ELKbiotech.com](mailto:ELKbio@ELKbiotech.com)

[www.elkbiotech.com](http://www.elkbiotech.com)

23-2, No.388 Gaoxin 2nd Road, Wuhan East Lake Hi-tech Development Zone, Hubei, P.R.C