



Ghrelin Receptor rabbit pAb

Cat No.:ES20736

For research use only

Overview

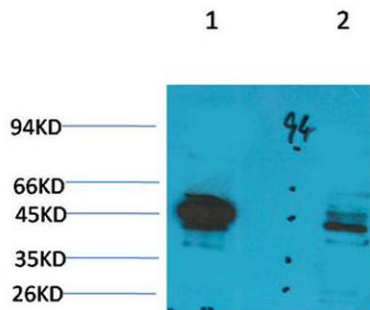
Product Name	Ghrelin Receptor rabbit pAb
Host species	Rabbit
Applications	WB;IHC;IF
Species Cross-Reactivity	Human;Rat;Mouse
Recommended dilutions	WB 1:1000-2000, IHC 1:100-200
Immunogen	Synthetic Peptide of Ghrelin Receptor AA range: 290-370
Specificity	Ghrelin Receptor protein(A232) detects endogenous levels of Ghrelin Receptor
Formulation	Liquid in PBS containing 50% glycerol, 0.5% BSA and 0.02% sodium azide.
Storage	Store at -20°C. Avoid repeated freeze-thaw cycles.
Protein Name	Growth hormone secretagogue receptor type 1 (GHS-R) (GH-releasing peptide receptor) (GHRP) (Ghrelin receptor)
Gene Name	GHSR
Cellular localization	Cell membrane; Multi-pass membrane protein.
Purification	The antibody was affinity-purified from rabbit antiserum by affinity-chromatography using epitope-specific immunogen.
Clonality	Polyclonal
Concentration	1 mg/ml
Observed band	41kD
Human Gene ID	2693
Human Swiss-Prot Number	Q92847
Alternative Names	Growth hormone secretagogue receptor type 1 (GHS-R;GH-releasing peptide receptor;GHRP;Ghrelin receptor)
Background	This gene encodes a member of the G-protein coupled receptor family. The encoded protein may play a role in energy homeostasis and regulation of body weight. Two identified transcript variants are expressed in several tissues and are evolutionary



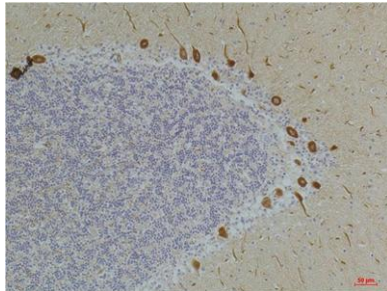


conserved in fish and swine. One transcript, 1a, excises an intron and encodes the functional protein; this protein is the receptor for the Ghrelin ligand and defines a neuroendocrine pathway for growth hormone release. The second transcript (1b) retains the intron and does not function as a receptor for Ghrelin; however, it may function to attenuate activity of isoform 1a. Mutations in this gene are associated with autosomal idiopathic short stature.[provided by RefSeq, Apr 2010],

Western blot analysis of 1) Rat Liver Tissue, 2) Jurkat with Ghrelin Receptor Rabbit pAb diluted at 1:2,000.



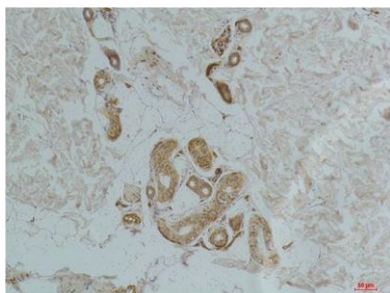
Immunohistochemical analysis of paraffin-embedded Human Brain Tissue using Ghrelin Receptor Rabbit pAb diluted at 1:200.





ELK Biotechnology

Immunohistochemical analysis of paraffin-embedded Human Skin Tissue using Ghrelin Receptor Rabbit pAb diluted at 1:200.



+86-27-59760950

ELKbio@ELKbiotech.com

www.elkbiotech.com

23-2, No.388 Gaoxin 2nd Road, Wuhan East Lake Hi-tech Development Zone, Hubei, P.R.C.