

# KChIP3 rabbit pAb

Cat No.:ES20699

For research use only

## Overview

Product Name	KChIP3 rabbit pAb
Host species	Rabbit
Applications	IHC;IF
Species Cross-Reactivity	Human;Rat;Mouse
Recommended dilutions	IHC 1:100-200
Immunogen	Synthetic Peptide of KChIP3 AA range: 169-219
Specificity	KChIP3 protein(A250) detects endogenous levels of KChIP3
Formulation	Liquid in PBS containing 50% glycerol, 0.5% BSA and 0.02% sodium azide.
Storage	Store at -20°C. Avoid repeated freeze-thaw cycles.
Protein Name	Calsenilin (A-type potassium channel modulatory protein 3) (DRE-antagonist modulator) (DREAM) (Kv channel-interacting protein 3) (KChIP3)
Gene Name	KCNIP3
Cellular localization	Cytoplasm . Cell membrane ; Lipid-anchor . Endoplasmic reticulum . Golgi apparatus . Nucleus . Also membrane-bound, associated with the plasma membrane (PubMed:15485870). In the presence of PSEN2 associated with the endoplasmic reticulum and Golgi. The su
Purification	The antibody was affinity-purified from rabbit antiserum by affinity-chromatography using epitope-specific immunogen.
Clonality	Polyclonal
Concentration	1 mg/ml
Observed band	29kD
Human Gene ID	30818
Human Swiss-Prot Number	Q9Y2W7
Alternative Names	KCNIP3; CSEN; DREAM; KCHIP3; Calsenilin; A-type potassium channel modulatory protein 3; DRE-antagonist modulator; DREAM; Kv channel-interacting protein 3; KChIP3

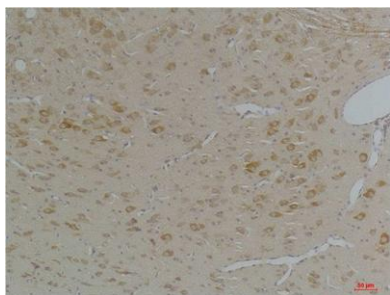




## Background

This gene encodes a member of the family of voltage-gated potassium (Kv) channel-interacting proteins, which belong to the recoverin branch of the EF-hand superfamily. Members of this family are small calcium binding proteins containing EF-hand-like domains. They are integral subunit components of native Kv4 channel complexes that may regulate A-type currents, and hence neuronal excitability, in response to changes in intracellular calcium. The encoded protein also functions as a calcium-regulated transcriptional repressor, and interacts with presenilins. Alternatively spliced transcript variants encoding different isoforms have been described. [provided by RefSeq, Jul 2008],

Immunohistochemical analysis of paraffin-embedded Rat BrainTissue using KChIP3 Rabbit pAb diluted at 1:200.



Immunohistochemical analysis of paraffin-embedded Mouse BrainTissue using KChIP3 Rabbit pAb diluted at 1:200.

