

# LDHD rabbit pAb

Cat No.:ES20678

For research use only

## Overview

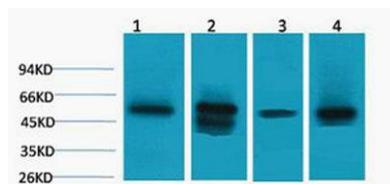
Product Name	LDHD rabbit pAb
Host species	Rabbit
Applications	WB
Species Cross-Reactivity	Human;Mouse;Rat
Recommended dilutions	WB: 1:1000-5000
Immunogen	Recombinant Protein of LDHD
Specificity	The antibody detects endogenous LDHD protein.
Formulation	Liquid in PBS containing 50% glycerol, 0.5% BSA and 0.02% sodium azide.
Storage	Store at -20°C. Avoid repeated freeze-thaw cycles.
Protein Name	Probable D-lactate dehydrogenase, mitochondrial
Gene Name	LDHD
Cellular localization	Mitochondrion .
Purification	The antibody was affinity-purified from rabbit antiserum by affinity-chromatography using epitope-specific immunogen.
Clonality	Polyclonal
Concentration	
Observed band	55kD
Human Gene ID	197257
Human Swiss-Prot Number	Q86WU2
Alternative Names	Probable D-lactate dehydrogenase, mitochondrial (DLD) (Lactate dehydrogenase D) (EC 1.1.2.4)
Background	The protein encoded by this gene belongs to the D-isomer specific 2-hydroxyacid dehydrogenase family. The similar protein in yeast has both D-lactate and D-glycerate dehydrogenase activities. Alternative splicing occurs at this locus and two transcript variants encoding distinct isoforms have been identified. [provided by RefSeq, Jul 2008],





**ELK Biotechnology**

Western blot analysis of 1) HeLa, 2) Mouse Skeletal Muscle, 3) Mouse Liver, 4) Rat Kidney, diluted at 1:5000. Secondary antibody(catalog#:RS0002) was diluted at 1:20000



+86-27-59760950

ELKbio@ELKbiotech.com

[www.elkbiotech.com](http://www.elkbiotech.com)

23-2, No.388 Gaoxin 2nd Road,Wuhan East Lake Hi-tech Development Zone, Hubei , P.R.C