

# Plant-actin rabbit pAb

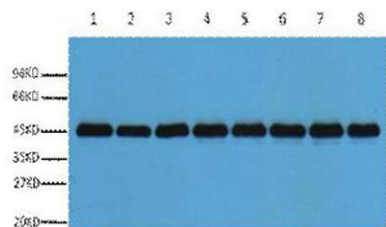
Cat No.:ES20641

For research use only

## Overview

Product Name	Plant-actin rabbit pAb
Host species	Rabbit
Applications	WB
Species Cross-Reactivity	ArabidopsisNicotianatabacumOryzasativaHordeumvulgare
Recommended dilutions	WB: 1:3000
Immunogen	Recombinant Protein of Plant-actin
Specificity	The antibody detects endogenous plant-actin protein.
Formulation	Liquid in PBS containing 50% glycerol, 0.5% BSA and 0.02% sodium azide.
Storage	Store at -20°C. Avoid repeated freeze-thaw cycles.
Protein Name	
Gene Name	
Cellular localization	
Purification	The antibody was affinity-purified from rabbit antiserum by affinity-chromatography using epitope-specific immunogen.
Clonality	Polyclonal
Concentration	
Observed band	43kD
Human Gene ID	
Human Swiss-Prot Number	
Alternative Names	YM3216
Background	Arabidopsis has a complex actin gene family that encodes six protein subclasses. One of the classes is represented by the proteins ACT2 and ACT8, which are similar proteins, but have different flanking sequences, introns and silent nucleotide positions in codons. ACT8 is expressed in root, stems, leaves, flowers, pollen and siliques.





Western blot analysis of *Nicotiana tabacum* leaf (1), *Nicotiana tabacum* root (2), *Nicotiana* seed (3), *Oryza sativa* flower (4), *Oryza sativa* seed (5), *Oryza sativa* leaf (6), *Hordeum vulgare* seed (7), *Hordeum vulgare* leaves (8), diluted at 1:3000. Secondary

