



## c-Src rabbit pAb

Cat No.:ES2064

For research use only

### Overview

Product Name	c-Src rabbit pAb
Host species	Rabbit
Applications	WB;IP;IHC;IF;ELISA
Species Cross-Reactivity	Human;Mouse;Rat
Recommended dilutions	Western Blot: 1/500 - 1/2000. Immunohistochemistry: 1/100 - 1/300. IP 1:50-200 ELISA: 1/5000. Not yet tested in other applications.
Immunogen	The antiserum was produced against synthesized peptide derived from human Src. AA range:487-536
Specificity	c-Src Polyclonal Antibody detects endogenous levels of c-Src protein.
Formulation	Liquid in PBS containing 50% glycerol, 0.5% BSA and 0.02% sodium azide.
Storage	Store at -20°C. Avoid repeated freeze-thaw cycles.
Protein Name	Proto-oncogene tyrosine-protein kinase Src
Gene Name	SRC
Cellular localization	Cell membrane ; Lipid-anchor . Mitochondrion inner membrane . Nucleus . Cytoplasm, cytoskeleton . Cytoplasm, perinuclear region . Cell junction, focal adhesion . Localizes to focal adhesion sites following integrin engagement (PubMed:22801373). Localization to focal adhesion sites requires myristoylation and the SH3 domain (PubMed:7525268). Colocalizes with PDLIM4 at the perinuclear region, but not at focal adhesions (PubMed:19307596)..
Purification	The antibody was affinity-purified from rabbit antiserum by affinity-chromatography using epitope-specific immunogen.
Clonality	Polyclonal
Concentration	1 mg/ml
Observed band	59kD
Human Gene ID	6714





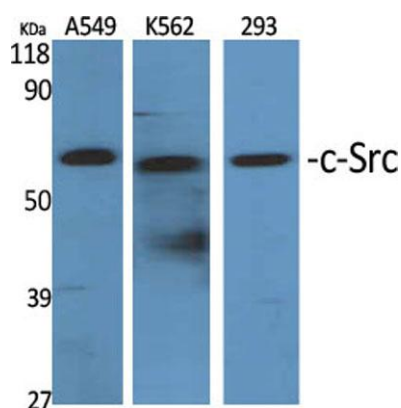
**Human Swiss-Prot Number**  
**Alternative Names**

P12931

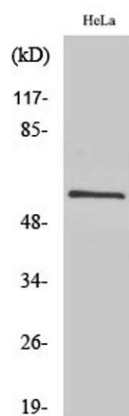
SRC; SRC1; Proto-oncogene tyrosine-protein kinase  
Src; Proto-oncogene c-Src; pp60c-src; p60-Src

**Background**

This gene is highly similar to the v-src gene of Rous sarcoma virus. This proto-oncogene may play a role in the regulation of embryonic development and cell growth. The protein encoded by this gene is a tyrosine-protein kinase whose activity can be inhibited by phosphorylation by c-SRC kinase. Mutations in this gene could be involved in the malignant progression of colon cancer. Two transcript variants encoding the same protein have been found for this gene. [provided by RefSeq, Jul 2008],



Western Blot analysis of various cells using c-Src  
Polyclonal Antibody diluted at 1:2000

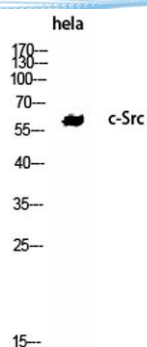


Western Blot analysis of HeLa cells using c-Src Polyclonal  
Antibody diluted at 1:2000

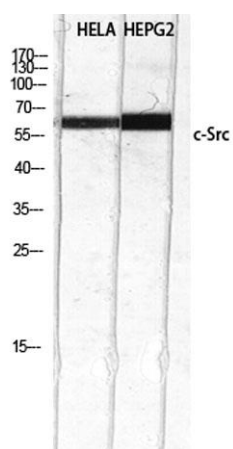




**ELK Biotechnology**



Western Blot analysis of hela using c-Src Polyclonal Antibody. Antibody was diluted at 1:2000



Western Blot analysis of HELA HEPG2 using c-Src Polyclonal Antibody diluted at 1:2000



+86-27-59760950

[ELKbio@ELKbiotech.com](mailto:ELKbio@ELKbiotech.com)

[www.elkbiotech.com](http://www.elkbiotech.com)

23-2, No.388 Gaoxin 2nd Road, Wuhan East Lake Hi-tech Development Zone, Hubei, P.R.C.