



# TBP rabbit pAb

Cat No.:ES20613

For research use only

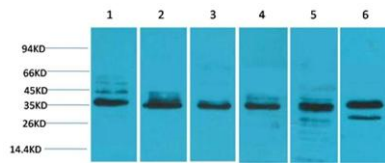
## Overview

Product Name	TBP rabbit pAb
Host species	Rabbit
Applications	WB;IHC;IF
Species Cross-Reactivity	Human;Rat;Mouse
Recommended dilutions	WB: 1:500-1:2000 IHC: 1:50-1:200
Immunogen	Recombinant Protein of TBP
Specificity	The antibody detects endogenous TBP protein
Formulation	Liquid in PBS containing 50% glycerol, 0.5% BSA and 0.02% sodium azide.
Storage	Store at -20°C. Avoid repeated freeze-thaw cycles.
Protein Name	TATA-box-binding protein (TATA sequence-binding protein) (TATA-binding factor) (TATA-box factor) (Transcription initiation factor TFIID TBP subunit)
Gene Name	TBP
Cellular localization	Nucleus .
Purification	The antibody was affinity-purified from rabbit antiserum by affinity-chromatography using epitope-specific immunogen.
Clonality	Polyclonal
Concentration	1 mg/ml
Observed band	38kD
Human Gene ID	6908
Human Swiss-Prot Number	P20226
Alternative Names	TATA-box-binding protein (TATA sequence-binding protein;TATA-binding factor;TATA-box factor;Transcription initiation factor TFIID TBP subunit)
Background	Initiation of transcription by RNA polymerase II requires the activities of more than 70 polypeptides. The protein that coordinates these activities is transcription factor IID (TFIID), which binds to the core promoter to position the polymerase properly, serves as the scaffold for assembly of the remainder



of the transcription complex, and acts as a channel for regulatory signals. TFIID is composed of the TATA-binding protein (TBP) and a group of evolutionarily conserved proteins known as TBP-associated factors or TAFs. TAFs may participate in basal transcription, serve as coactivators, function in promoter recognition or modify general transcription factors (GTFs) to facilitate complex assembly and transcription initiation. This gene encodes TBP, the TATA-binding protein. A distinctive feature of TBP is a long string of glutamines in the N-terminus. This region of the protein modulates the DNA bin

Western blot analysis of 1) HeLa, 2) 293T, 3) C2C12, 4) Mouse Liver Tissue, 5) PC12, 6) Rat Brain Tissue with TBP Rabbit pAb diluted at 1:2,000.



Immunohistochemical analysis of paraffin-embedded Human Breast Carcinoma using TBPRabbit pAb diluted at 1:200.

