

PCSK9 rabbit pAb

Cat No.:ES20358

For research use only

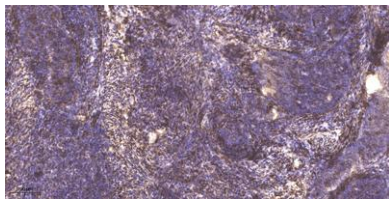
Overview

Product Name	PCSK9 rabbit pAb
Host species	Rabbit
Applications	WB;IHC
Species Cross-Reactivity	Human;Rat;Mouse;
Recommended dilutions	WB 1:500-2000;IHC-p 1:50-300
Immunogen	Synthesized peptide derived from human PCSK9
Specificity	This antibody detects endogenous levels of Human PCSK9
Formulation	Liquid in PBS containing 50% glycerol, 0.5% BSA and 0.02% sodium azide.
Storage	Store at -20°C. Avoid repeated freeze-thaw cycles.
Protein Name	PCSK9
Gene Name	PCSK9 NARC1 PSEC0052
Cellular localization	Cytoplasm. Secreted. Endosome. Lysosome. Cell surface. Endoplasmic reticulum. Golgi apparatus. Autocatalytic cleavage is required to transport it from the endoplasmic reticulum to the Golgi apparatus and for the secretion of the mature protein. Localizes
Purification	The antibody was affinity-purified from rabbit antiserum by affinity-chromatography using epitope-specific immunogen.
Clonality	Polyclonal
Concentration	1 mg/ml
Observed band	
Human Gene ID	255738
Human Swiss-Prot Number	Q8NBP7
Alternative Names	Proprotein convertase subtilisin/kexin type 9 (EC 3.4.21.-;Neural apoptosis-regulated convertase 1;NARC-1;Proprotein convertase 9;PC9;Subtilisin/kexin-like protease PC9)
Background	cofactor:Calcium.,disease:Defects in PCSK9 are the cause of familial hypercholesterolemia 3 (FH3)



[MIM:603776]. FH3 inheritance is autosomal dominant.,enzyme regulation:Inhibited by EGTA.,function:May be implicated in the differentiation of cortical neurons and may play a role in cholesterol homeostasis.,PTM:The soluble zymogen undergoes autocatalytic intramolecular processing in the endoplasmic reticulum, resulting in the cleavage of its propeptide that remains associated with the secreted enzyme.,similarity:Belongs to the peptidase S8 family.,similarity:Contains 1 peptidase S8 domain.,subunit:The precursor protein but not the mature protein may form multimers.,tissue specificity:Expressed in neuro-epithelioma, colon carcinoma, hepatic and pancreatic cell lines, and in Schwann cells.,

Immunohistochemical analysis of paraffin-embedded human cervical carcinoma. 1, Antibody was diluted at 1:200(4° overnight). 2, Tris-EDTA,pH9.0 was used for antigen retrieval. 3,Secondary antibody was diluted at 1:200(room temperature, 45min).



Immunohistochemical analysis of paraffin-embedded human oophoroma. 1, Antibody was diluted at 1:200(4° overnight). 2, Tris-EDTA,pH9.0 was used for antigen retrieval. 3,Secondary antibody was diluted at 1:200(room temperature, 45min).

