



EPHA7 (Phospho Tyr608) rabbit pAb

Cat No.:ES20191

For research use only

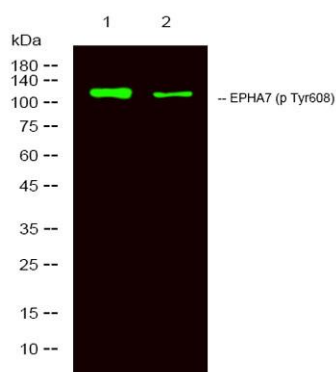
Overview

Product Name	EPHA7 (Phospho Tyr608) rabbit pAb
Host species	Rabbit
Applications	WB; ELISA
Species Cross-Reactivity	Human;Mouse;Rat
Recommended dilutions	WB 1:1000-2000 ELISA 1:5000-20000
Immunogen	Synthesized peptide derived from human EPHA7 (Phospho Tyr608)
Specificity	This antibody detects endogenous levels of Human,Mouse,Rat EPHA7 (Phospho Tyr608)
Formulation	Liquid in PBS containing 50% glycerol, 0.5% BSA and 0.02% sodium azide.
Storage	Store at -20°C. Avoid repeated freeze-thaw cycles.
Protein Name	EPHA7 (Phospho Tyr608)
Gene Name	EPHA7 EHK3 HEK11
Cellular localization	Cell membrane ; Single-pass type I membrane protein .
Purification	The antibody was affinity-purified from rabbit antiserum by affinity-chromatography using epitope-specific immunogen.
Clonality	Polyclonal
Concentration	1 mg/ml
Observed band	112kD
Human Gene ID	2045
Human Swiss-Prot Number	Q15375
Alternative Names	Ephrin type-A receptor 7 (EC 2.7.10.1;EPH homology kinase 3;EHK-3;EPH-like kinase 11;EK11;hEK11)
Background	catalytic activity:ATP + a [protein]-L-tyrosine = ADP + a [protein]-L-tyrosine phosphate.,function:Receptor for members of the ephrin-A family. Binds to ephrin-A1, -A2, -A3, -A4 and -A5.,similarity:Belongs to the protein kinase superfamily. Tyr protein kinase family. Ephrin receptor subfamily.,similarity:Contains 1 protein kinase domain.,similarity:Contains 1 SAM





(sterile alpha motif) domain.,similarity:Contains 2 fibronectin type-III domains.,subunit:Interacts with PRKCABP and GRIP1.,tissue specificity:Widely expressed.,



Western Blot analysis of 1 HeLa, 2 treated with LPS 100ng/mL 20min,using primary antibody at 1:1000 dilution. Secondary antibody(catalog#:RS23920) was diluted at 1:10000

